

Fasciolosis

From Wikipedia, the free encyclopedia

Fasciolosis (also known as **fascioliasis**, **fasciolasis**, **distomatosis** and **liver rot**) is a parasitic worm infection caused by the common liver fluke *Fasciola hepatica* as well as by *Fasciola gigantica*. The disease is a plant-borne trematode zoonosis,^[1] and is classified as a neglected tropical disease (NTD).^{[2][3]} It affects humans, but its main host is ruminants such as cattle and sheep.^[2] The disease progresses through four distinct phases; an initial incubation phase of between a few days up to three months with little or no symptoms; an invasive or acute phase which may manifest with: fever, malaise, abdominal pain,

gastrointestinal symptoms, urticaria, anemia, jaundice, and respiratory symptoms.^[4] The disease later progresses to a latent phase with less symptoms and ultimately into a chronic or obstructive phase months to years later.^{[5][6]} In the chronic state the disease causes inflammation of the bile ducts, gall bladder and may cause gall stones as well as fibrosis.^[2] While chronic inflammation is connected to increased cancer rates, it is unclear whether fasciolosis is associated with increased cancer risk.^[7]

Up to half of those infected display no symptoms,^[2] and diagnosis is difficult because the worm eggs are often missed in fecal examination.^[2] The methods of detection are through fecal examination, parasite-specific antibody detection, or radiological diagnosis, as well as laparotomy. In case of a suspected outbreak it may be useful to keep track of dietary history, which is also useful for exclusion of differential diagnoses.^[2] Fecal examination is generally not helpful because the worm eggs can seldom be detected in the chronic phase of the infection. Eggs appear in the feces first between 9–11 weeks post-infection. The cause of this is unknown, and it is also difficult to distinguish between the different species of fasciola as well as distinguishing them from echinostomes and *Fasciolopsis*.^[2] Most immunodiagnostic tests detect infection with very high sensitivity, and as concentration drops after

Fasciolosis



Fasciola hepatica

Classification and external resources

Specialty	Infectious medicine
ICD-10	B66.3 (http://apps.who.int/classifications/icd10/browse/2016/en#/B66.3)
ICD-9-CM	121.3 (http://www.icd9data.com/getICD9Code.aspx?icd9=121.3)
DiseasesDB	4757 (http://www.diseasesdatabase.com/ddb4757.htm)
eMedicine	ped/760 (http://www.emedicine.com/ped/topic760.htm)
MeSH	D005211 (https://www.nlm.nih.gov/cgi/mesh/2017/MB_cgi?field=uid&term=D005211)

treatment, it is a very good diagnostic method.^[2] Clinically it is not possible to differentiate from other liver and bile diseases. Radiological methods can detect lesions in both acute and chronic infection, while laparotomy will detect lesions and also occasionally eggs and live worms.^[2]

Because of the size of the parasite, as adult *F. hepatica*: 20–30 × 13 mm (0.79–1.18 × 0.51 inches) or adult *F. gigantica*: 25–75×12 mm, fasciolosis is a big concern.^[2] The amount of symptoms depend on how many worms and what stage the infection is in. The death rate is significant in both sheep and cattle, but generally low among humans. Treatment with triclabendazole has been highly effective against the adult worms as well as various developing stages.^{[2][4]} Praziquantel is not effective, and older drugs such as bithionol are moderately effective but also cause more side effects. Secondary bacterial infection causing cholangitis has also been a concern and can be treated with antibiotics, and toxæmia may be treated with prednisolone.^[2]

Humans are infected by eating watergrown plants, primarily wild-grown watercress in Europe or morning glory in Asia. Infection may also occur by drinking contaminated water with floating young fasciola or when using utensils washed with contaminated water.^[2] Cultivated plants do not spread the disease in the same capacity. Human infection is rare, even if the infection rate is high among animals. Especially high rates of human infection have been found in Bolivia, Peru and Egypt, and this may be due to consumption of certain foods.^[2] No vaccine is available to protect people against *Fasciola* infection.^[8] Preventative measures are primarily treating and immunization of the livestock, which are required to host the live cycle of the worms. Veterinary vaccines are in development, and their use is being considered by a number of countries on account of the risk to human health and economic losses resulting from livestock infection.^[2] Other methods include using molluscicides to decrease the number of snails that act as vectors, but it is not practical.^[2] Educational methods to decrease consumption of wild watercress and other waterplants has been shown to work in areas with a high disease burden.^[2]

In some areas of the world where fascioliasis has been found (endemic), special control programs are in place or have been planned.^[8] The types of control measures depend on the setting (such as epidemiologic, ecologic, and cultural factors).^[8] Strict control of the growth and sale of watercress and other edible water plants is important. Individual people can protect themselves by not eating raw watercress and other water plants, especially from endemic grazing areas.^[8] Travelers to areas with poor sanitation should avoid food and water that might be contaminated (tainted).^[8] Vegetables grown in fields, that might have been irrigated with polluted water, should be thoroughly cooked, as should viscera from potentially infected animals.^[8]

Fascioliasis occurs in Europe, Africa, the Americas as well as Oceania.^[2] Recently, worldwide losses in animal productivity due to fasciolosis were conservatively estimated at over US\$3.2 billion per annum.^[9] Fasciolosis is now recognized as an emerging human disease: the World Health Organization (WHO) has estimated that 2.4 million people are infected with *Fasciola*, and a further 180 million are at risk of infection.^[10]

Contents

- 1 Signs and symptoms
 - 1.1 Humans
 - 1.2 Other animals
- 2 Cause
 - 2.1 Transmission
 - 2.2 Intermediate hosts
- 3 Mechanism
 - 3.1 Resistance to infection
- 4 Diagnosis
- 5 Treatment and prevention
- 6 Epidemiology
 - 6.1 Europe
 - 6.2 Americas
 - 6.3 Africa
 - 6.4 Asia
 - 6.5 Australia and the Oceania
- 7 Other animals
- 8 See also
- 9 References
- 10 External links

Signs and symptoms

Humans

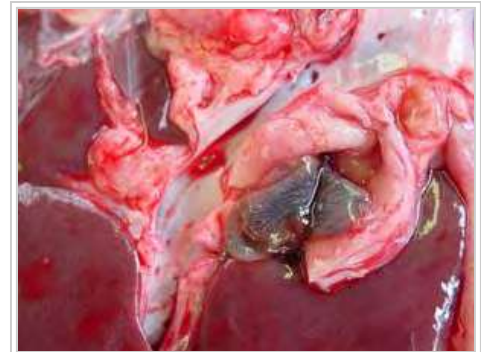
The course of fasciolosis in humans has 4 main phases:^[5]

- **Incubation phase:** from the ingestion of metacercariae to the appearance of the first symptoms; time period: few days to 3 months; depends on number of ingested metacercariae and immune status of host
- **Invasive or acute phase:** fluke migration up to the bile ducts. This phase is a result of mechanical destruction of the hepatic tissue and the peritoneum by migrating juvenile flukes causing localized and or generalized toxic and allergic reactions.^[11] The major symptoms of this phase are:
 - Fever: usually the first symptom of the disease; 40–42 °C (104–108 °F)
 - Abdominal pain
 - Gastrointestinal disturbances: loss of appetite, flatulence, nausea, diarrhea
 - Urticaria



Hypertrophied bile ducts in liver caused by *F. hepatica* (liver section of an infested goat)

- Respiratory symptoms (very rare): cough, dyspnoea, chest pain, hemoptysis
- Hepatomegaly and splenomegaly
- Ascites
- Anaemia
- Jaundice
- **Latent phase:** This phase can last for months or years. The proportion of asymptomatic subjects in this phase is unknown. They are often discovered during family screening after a patient is diagnosed.^[5]
- **Chronic or obstructive phase:**



Adult flukes *Fasciola hepatica* in bile ducts (liver of goat)

This phase may develop months or years after initial infection.

Adult flukes in the bile ducts cause inflammation and hyperplasia of the epithelium. The resulting cholangitis and cholecystitis, combined with the large body of the flukes, are sufficient to cause mechanical obstruction of the biliary duct. In this phase, biliary colic, epigastric pain, fatty food intolerance, nausea, jaundice, pruritus, right upper-quadrant abdominal tenderness, etc., are clinical manifestations indistinguishable from cholangitis, cholecystitis and cholelithiasis of other origins. Hepatic enlargement may be associated with an enlarged spleen or ascites. In case of obstruction, the gall bladder is usually enlarged and edematous with thickening of the wall (Ref: Hepatobiliary Fascioliasis: Sonographic and CT Findings in 87 Patients During the InitialPhase and Long-Term Follow-Up. Adnan Kabaalioglu, Kagan Ceken,Emel Alimoglu,Rabin Saba,Metin Cubuk,Gokhan Arslan,Ali Apaydin. AJR 2007; 189:824–828). Fibrous adhesions of the gall bladder to adjacent organs are common. Lithiasis of the bile duct or gall bladder is frequent and the stones are usually small and multiple.^[5]

Other animals

Clinical signs of fasciolosis are always closely associated with infectious dose (amount of ingested metacercariae). In sheep, as the most common definitive host, clinical presentation is divided into 4 types:^{[12][13]}

- **Acute Type I Fasciolosis:** infectious dose is more than 5000 ingested metacercariae. Sheep suddenly die without any previous clinical signs. Ascites, abdominal haemorrhage, icterus, pallor of membranes, weakness may be observed in sheep.
- **Acute Type II Fasciolosis:** infectious dose is 1000-5,000 ingested metacercariae. As above, sheep die but briefly show pallor, loss of condition and ascites.
- **Subacute Fasciolosis:** infectious dose is 800-1000 ingested metacercariae. Sheep are lethargic, anemic and may die. Weight loss is dominant feature.
- **Chronic Fasciolosis:** infectious dose is 200-800 ingested metacercariae. Asymptomatic or gradual development of bottle jaw and ascites (ventral edema), emaciation, weight loss.

In blood, anemia, hypoalbuminemia, and eosinophilia may be observed in all types of fasciolosis.^[13] Elevation of liver enzyme activities, such a glutamate dehydrogenase (GLDH), gamma-glutamyl transferase (GGT), and lactate dehydrogenase (LDH), is detected in subacute or chronic fasciolosis

from 12-15 week after ingestion of metacercariae.^{[14][15]} Economical effect of fasciolosis in sheep consists in sudden deaths of animals as well as in reduction of weight gain and wool production.^{[16][17]} In goats and cattle, the clinical manifestation is similar to sheep. However, acquired resistance to *F. hepatica* infection is well known in adult cattle.^{[18][19]} Calves are susceptible to disease but in excess of 1000 metacercariae are usually required to cause clinical fasciolosis. In this case the disease is similar to sheep and is characterized by weight loss, anemia, hypoalbuminemia and (after infection with 10,000 metacercariae) death.^[20] Importance of cattle fasciolosis consist in economic losses caused by condemnation of livers at slaughter and production losses especially due to reduced weight gain.^[21]

In sheep and sometimes cattle, the damaged liver tissue may become infected by the *Clostridium* bacteria *C. novyi* type B. The bacteria will release toxins into the bloodstream resulting in what is known as black disease. There is no cure and death follows quickly. As *C. novyi* is common in the environment, black disease is found wherever populations of liver flukes and sheep overlap.^[22]

Cause

Fasciolosis is caused by two digenetic trematodes *F. hepatica* and *F. gigantica*. Adult flukes of both species are localized in the bile ducts of the liver or gallbladder. *F. hepatica* measures 2 to 3 cm and has a cosmopolitan distribution. *F. gigantica* measures 4 to 10 cm in length and the distribution of the species is limited to the tropics and has been recorded in Africa, the Middle East, Eastern Europe and south and eastern Asia.^[24] In domestic livestock in Japan, diploid ($2n = 20$), triploid ($3n = 30$) and chimeric flukes ($2n/3n$) have been described, many of which reproduce parthenogenetically. As a result of this unclear classification, flukes in Japan are normally referred to as *Fasciola* spp.^[25] Recent reports based on mitochondrial genes analysis has shown that Japanese *Fasciola* spp. is more closely related to *F. gigantica* than to *F. hepatica*.^[26] In India, a species called *F. jacksoni* was described in elephants.^[27]

Transmission

Human *F. hepatica* infection is determined by the presence of the intermediate snail hosts, domestic herbivorous animals, climatic conditions and the dietary habits of man.^[28] Sheep, goats and cattle are considered the predominant animal reservoirs. While other animals can be infected, they are usually not very important for human disease transmission. On the other hand, some authors have observed that donkeys and pigs contribute to disease transmission in Bolivia.^[29] Among wild animals, it has been demonstrated that the peridomestic rat (*Rattus rattus*) may play an important role in the spread as well as in the transmission of the parasite in Corsica.^[30] In France, nutria (*Myocastor coypus*) was confirmed as a wild reservoir host of *F. hepatica*.^[31] Humans are infected by ingestion of aquatic plants that contain the infectious cercariae.^[32] Several species of aquatic vegetables are known as a vehicle of human infection. In Europe, *Nasturtium officinale* (common watercress), *Nasturtium silvestris*, *Rorippa amphibia* (wild watercress), *Taraxacum dens leonis* (dandelion leaves), *Valerianella olitoria* (lamb's lettuce), and *Mentha viridis* (spearmint) were reported as a source of human infections.^[5] In the Northern Bolivian Altiplano, some authors suggested that several aquatic plants such as bero-bero

(watercress), algae (algae), kjosco and tortora could act as a source of infection for humans.^[33] Because *F. hepatica* cercariae also encyst on water surface, humans can be infected by drinking of fresh untreated water containing cercariae.^[28] In addition, an experimental study suggested that humans consuming raw liver dishes from fresh livers infected with juvenile flukes could become infected.^[34]

Intermediate hosts

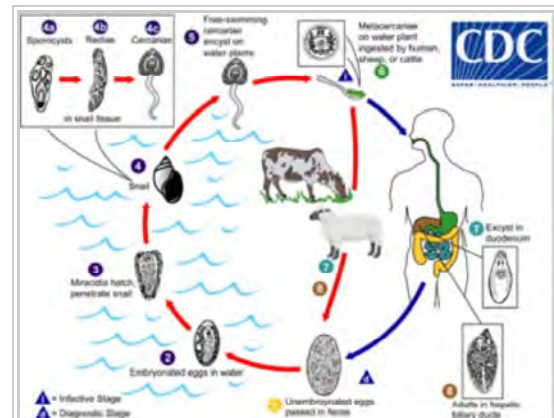
Intermediate hosts of *F. hepatica* are freshwater snails from family Lymnaeidae.^{[24][35]} Snails from family Planorbidae act as an intermediate host of *F. hepatica* very occasionally.^[1]

Mechanism

The development of infection in definitive host is divided into two phases: the parenchymal (migratory) phase and the biliary phase.^[12] The parenchymal phase begins when excysted juvenile flukes penetrate the intestinal wall. After the penetration of the intestine, flukes migrate within the abdominal cavity and penetrate the liver or other organs. *F. hepatica* has a strong predilection for the tissues of the liver.^[13] Occasionally, ectopic locations of flukes such as the lungs, diaphragm, intestinal wall, kidneys, and subcutaneous tissue can occur.^{[20][28]} During the migration of flukes, tissues are mechanically destroyed and inflammation appears around migratory tracks of flukes. The second phase (the biliary phase) begins when parasites enter the biliary ducts of the liver. In biliary ducts, flukes mature, feed on blood, and produce eggs. Hypertrophy of biliar ducts associated with obstruction of the lumen occurs as a result of tissue damage.

Resistance to infection

Mechanisms of resistance have been studied by several authors in different animal species. These studies may help to better understand the immune response to *F. hepatica* in host and are necessary in development of vaccine against the parasite. It has been established that cattle acquire resistance to challenge



Immature eggs are discharged in the biliary ducts and in the stool

1. Eggs become embryonated in water 2, eggs release miracidia 3, which invade a suitable snail intermediate host 4, including the genera Galba, Fossaria and Pseudosuccinea. In the snail the parasites undergo several developmental stages (sporocysts The number 4a, rediae The number 4b, and cercariae The number 4c). The cercariae are released from the snail 5 and encyst as metacercariae on aquatic vegetation or other surfaces. Mammals acquire the infection by eating vegetation containing metacercariae. Humans can become infected by ingesting metacercariae-containing freshwater plants, especially watercress 6. After ingestion, the metacercariae excyst in the duodenum 7 and migrate through the intestinal wall, the peritoneal cavity, and the liver parenchyma into the biliary ducts, where they develop into adults 8. In humans, maturation from metacercariae into adult flukes takes approximately 3 to 4 months. The adult flukes (*Fasciola hepatica*: up to 30 mm by 13 mm; *F. gigantica*: up to 75 mm) reside in the large biliary ducts of the mammalian host. *Fasciola hepatica* infect various animal species, mostly herbivores.^[23]

infection with *F. hepatica* and *F. gigantica* when they have been sensitized with primary patent or drug-abbreviated infection.^[18]

Resistance to fasciolosis was also documented in rats.^[36] On the other hand, sheep and goats are not resistant to re-infection with *F. hepatica*.^{[37][38]} However, there is evidence that two sheep breeds, in particular Indonesian thin tail sheep and Red maasai sheep, are resistant to *F. gigantica*.^{[39][40]} No reports concerning the resistance in humans are available.

Diagnosis

Most immunodiagnostic tests will detect infection and have a sensitivity above 90% during all stages of the diseases. In addition antibody concentration quickly drops post treatment and no antibodies are present one year after treatment, which makes it a very good diagnostic method.^[2] In humans, diagnosis of fasciolosis is usually achieved parasitologically by findings the fluke eggs in stool, and immunologically by ELISA and Western blot. Coprological examinations of stool alone are generally not adequate because infected humans have important clinical presentations long before eggs are found in the stools.

Moreover, in many human infections, the fluke eggs are often not found in the faeces, even after multiple faecal examinations.^{[28][41]} Furthermore, eggs of *F. hepatica*, *F. gigantica* and *Fasciolopsis buski* are morphologically indistinguishable.^[41] Therefore, immunonological methods such ELISA and enzyme-linked immunoelectrotransfer blot, also called Western blot, are the most important methods in diagnosis of *F. hepatica* infection. These immunological tests are based on detection of species-specific antibodies from sera. The antigenic preparations used have been primarily derived from extracts of excretory/secretory products from adult worms, or with partially purified fractions.^[42] Recently, purified native and recombinant antigens have been used, e.g. recombinant *F. hepatica* cathepsin L-like protease.^[43]

Methods based on antigen detection (circulating in serum or in faeces) are less frequent. In addition, biochemical and haematological examinations of human sera support the exact diagnosis (eosinophilia, elevation of liver enzymes). Ultrasonography and xray of the abdominal cavity, biopsy of liver, and gallbladder punctuate can also be used (ref: US-guided gallbladder aspiration: a new diagnostic method for biliary fascioliasis. A. Kabaalioglu, A. Apaydin, T. Sindel, E. Lüleci. Eur. Radiol. 9, 880±882 (1999) . False fasciolosis (pseudofasciolosis) refers to the presence of eggs in the stool resulting not from an actual infection but from recent ingestion of infected livers containing eggs. This situation (with its potential for misdiagnosis) can be avoided by having the patient follow a liver-free diet several days before a repeat stool examination.^[42]

In animals, intravital diagnosis is based predominantly on faeces examinations and immunological methods. However, clinical signs, biochemical and haematological profile, season, climate conditions, epidemiology situation, and examinations of snails must be considered.^{[12][24]} Similarly to humans, faeces examinations are not reliable. Moreover, the fluke eggs are detectable in faeces 8–12 weeks



Galba truncatula - the most common intermediate host of *F. hepatica* in Europe and South America

post-infection. In spite of that fact, faecal examination is still the only used diagnostic tool in some countries. While coprological diagnosis of fasciolosis is possible from 8-12 week post-infection (WPI), *F. hepatica* specific-antibodies are recognized using ELISA or Western blot after 2-4 week post-infection.^{[44][45]} Therefore, these methods provide early detection of the infection.

Treatment and prevention

Several drugs are effective for fascioliasis, both in humans and in domestic animals. The drug of choice in the treatment of fasciolosis is triclabendazole, a member of the benzimidazole family of anthelmintics.^[46] The drug works by preventing the polymerization of the molecule tubulin into the cytoskeletal structures, microtubules. Resistance of *F. hepatica* to triclabendazole has been recorded in Australia in 1995^[47] and Ireland in 1998.^[48]

Praziquantel treatment is ineffective.^{[49][50]} There are case reports of nitazoxanide being successfully used in human fasciolosis treatment in Mexico.^[51] There are also reports of bithionol being used successfully.^[52]

More recently, Mirazid, an Egyptian drug made from myrrh, has been investigated as an oral treatment of trematode-caused ailments including fascioliasis.^[53]

Nitazoxanide has been found effective in trails, but is currently not recommended.^[2] The life cycle includes freshwater snails as an intermediate host of the parasite.^[24]

Epidemiology

Human and animal fasciolosis occurs worldwide.^[24] While animal fasciolosis is distributed in countries with high cattle and sheep production, human fasciolosis occurs, excepting Western Europe, in developing countries. Fasciolosis occurs only in areas where suitable conditions for intermediate hosts exist.

Studies carried out in recent years have shown human fasciolosis to be an important public health problem.^[28] Human fasciolosis has been reported from countries in Europe, America, Asia, Africa and Oceania. The incidence of human cases has been increasing in 51 countries of the five continents.^{[5][6]} A global analysis shows that the expected correlation between animal and human fasciolosis only appears at a basic level. High prevalences in humans are not necessarily found in areas where fasciolosis is a great veterinary problem. For instance, in South America, hyperendemics and mesoendemics are found in Bolivia and Peru where the veterinary problem is less important, while in countries such as Uruguay, Argentina and Chile, human fasciolosis is only sporadic or hypoendemic.^[6]

Europe

In Europe, human fasciolosis occur mainly in France, Spain, Portugal, and the former USSR.^[6] France is considered an important human endemic area. A total of 5863 cases of human fasciolosis were recorded from nine French hospitals from 1970 to 1982.^[54] Concerning the former Soviet Union, almost all reported cases were from the Tajik Republic.^[6] Several papers referred to human fasciolosis in Turkey.^[55] Recently, serological survey of human fasciolosis was performed in some parts of Turkey. The prevalence of the disease was serologically found to be 3.01% in Antalya Province, and between 0.9 and 6.1% in Isparta Province, Mediterranean region of Turkey.^[56] In other European countries, fasciolosis is sporadic and the occurrence of the disease is usually combined with travelling to endemic areas.

Americas

In North America, the disease is very sporadic. In Mexico, 53 cases have been reported. In Central America, fasciolosis is a human health problem in the Caribbean islands, especially in zones of Puerto Rico and Cuba. Pinar del Río Province and Villa Clara Province are Cuban regions where fasciolosis was hyperendemic. In South America, human fasciolosis is a serious problem in Bolivia, Peru, and Ecuador. These Andean countries are considered to be the area with the highest prevalence of human fasciolosis in the world. Well-known human hyperendemic areas are localized predominately in the high plain called altiplano. In the Northern Bolivian Altiplano, prevalences detected in some communities were up to 72% and 100% in coprological and serological surveys, respectively.^[5] In Peru, *F. hepatica* in humans occurs throughout the country. The highest prevalences were reported in Arequipa, Mantaro Valley, Cajamarca Valley, and Puno Region.^[1] In other South American countries like Argentina, Uruguay, Brazil, Venezuela and Colombia, human fasciolosis appear to be sporadic, despite the high prevalences of fasciolosis in cattle.

Africa

In Africa, human cases of fasciolosis, except in northern parts, have not been frequently reported. The highest prevalence was recorded in Egypt where the disease is distributed in communities living in the Nile Delta.^[1]

Asia

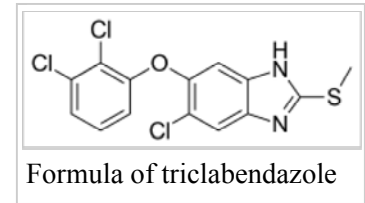
In Asia, the most human cases were reported in Iran, especially in Gīlān Province, on the Caspian Sea. It was mentioned that more than 10,000 human cases were detected in Iran. In eastern Asia, human fasciolosis appears to be sporadic. Few cases were documented in Japan, Korea, Vietnam, and Thailand.^[5]

Australia and the Oceania

In Australia, human fasciolosis is very rare (only 12 cases documented). In New Zealand, *F. hepatica* has never been detected in humans.^[5]

Other animals

A number of drugs have been used in control fasciolosis in animals. Drugs differ in their efficacy, mode of action, price, and viability. Fasciolicides (drugs against *Fasciola* spp.) fall into five main chemical groups:^[57]



- Halogenated phenols: bithionol (Bitin), hexachlorophene (Bilevon), nitroxynil (Trodax)
- Salicylanilides: closantel (Flukiver, Supaverm), rafoxanide (Flukanide, Ranizole)
- Benzimidazoles: triclabendazole (Fasinex), albendazole (Vermidan, Valbazen), mebendazol (Telmin), luxabendazole (Fluxacur)
- Sulphonamides: clorsulon (Ivomec Plus)
- Phenoxyalkanes: diamphenetide (Coriban)

Triclabendazole (Fasinex) is considered as the most common drug due to its high efficacy against adult as well as juvenile flukes. Triclabendazole is used in control of fasciolosis of livestock in many countries. Nevertheless, long-term veterinary use of triclabendazole has caused appearance of resistance in *F. hepatica*. In animals, triclabendazole resistance was first described in Australia,^[58] later in Ireland^[59] and Scotland^[60] and more recently in the Netherlands.^[61] Considering this fact, scientists have started to work on the development of new drug. Recently, a new fasciolicide was successfully tested in naturally and experimentally infected cattle in Mexico. This new drug is called 'Compound Alpha' and is chemically very similar to triclabendazole.^[62]

Countries where fasciolosis in livestock was repeatedly reported:

- Europe: UK, Ireland, France, Portugal, Spain, Switzerland, Italy, Netherlands, Germany, Poland
- Asia: Turkey, Russia, Thailand, Iraq, Iran, China, Vietnam, India, Nepal, Japan, Korea, Philippines
- Africa: Kenya, Zimbabwe, Nigeria, Egypt, Gambia, Morocco
- Australia and the Oceania: Australia, New Zealand
- Americas: United States, Mexico, Cuba, Peru, Chile, Uruguay, Argentina, Jamaica, Brazil

On September 8, 2007, Veterinary officials in South Cotabato, Philippines said that laboratory tests on samples from cows, carabaos, and horses in the province's 10 towns and lone city showed the level of infection at 89.5%, a sudden increase of positive cases among large livestock due to the erratic weather condition in the area. They must be treated forthwith to prevent complications with surra and hemorrhagic septicemia diseases. Surra already affected all barangays of the Surallah town.^[63]

See also

- Fasciolopsiasis
- Clonorchiasis

References

- Mas-Coma S, Bargues MD, Valero MA (October 2005). "Fascioliasis and other plant-borne trematode zoonoses". *Int. J. Parasitol.* **35** (11–12): 1255–78. doi:10.1016/j.ijpara.2005.07.010. PMID 16150452.
- Farrar, Jeremy; Hotez, Peter; Junghanss, Thomas; Kang, Gagandeep; Laloo, David; White, Nicholas J. (2013-10-26). *Manson's Tropical Diseases*. Elsevier Health Sciences. ISBN 9780702053061.
- "Neglected Tropical Diseases". *cdc.gov*. June 6, 2011. Retrieved 28 November 2014.
- "CDC - Fasciola - Treatment". *www.cdc.gov*. Retrieved 2015-07-17.
- Mas-Coma, S; Bargues MD; Esteban JG (1999). "Human fasciolosis.". In Dalton, JP. *Fasciolosis*. Wallingford, Oxon, UK: CABI Pub. pp. 411–34. ISBN 0-85199-260-9.
- Esteban, J.G., Bargues, M.D., Mas-Coma, S., 1998. "Geographical distribution, diagnosis and treatment of human fascioliasis: a review". *Res. Rev. Parasitol.* **58**, 13–42.
- "Fasciolosis and tumour growth" (PDF). Göteborgs universitetsbibliotek: Logga in via proxy. Retrieved 2015-07-17.
- "CDC - Fasciola - Prevention & Control". *www.cdc.gov*. Retrieved 2015-07-17.
- Spithill, TW; Smooker PM; Copeman DB (1999). "*Fasciola gigantica*: epidemiology, control, immunology and molecular biology". In Dalton, JP. *Fasciolosis*. Wallingford, Oxon, UK: CABI Pub. pp. 465–525. ISBN 0-85199-260-9.
- Anonymus (1995). *Control of Foodborne Trematode Infections. WHO Technical Series No. 849*. WHO, Geneva, 157 pp.
- Facey, R.V., Marsden, P.D. (1960). "Fascioliasis in man: an outbreak in Hampshire". *Brit. Med. J.* **ii**, 619–625.
- Dubinský, P., 1993. Trematódy a trematodózy. In: Jurášek, V., Dubinský, P. a kolektív, Veterinárna parazitológia. Príroda a.s., Bratislava, 158–187. (in Slovakian)
- Behm, C.A., Sangster, N.C., 1999. Pathology, pathophysiology and clinical aspects. In: Dalton, J.P. (Ed.), *Fasciolosis*. CAB International Publishing, Wallingford, pp. 185–224.
- Anderson P.H.; Matthews J.G.; Berrett S.; Brush P.J.; Patterson D.S. (1981). "Changes in plasma enzyme activities and other blood components in response to acute and chronic liver damage in cattle". *Res Vet Sci.* **31** (1): 1–4. PMID 6118918.
- Sykes A.R.; Coop A.R.; Robinson M.G. (1980). "Chronic subclinical ovine fascioliasis: plasma glutamate dehydrogenase, gamma glutamyl transpeptidase and aspartate aminotransferase activities and their significance as diagnostic aids.". *Res. Vet. Sci.* **28**: 71–78.
- Sinclair, K.B. (1962). "Observations on the clinical pathology of ovine fascioliasis.". *Brit. Vet. J.* **118**: 37–53.
- Roseby, F.B. (1970). "The effect of fasciolosis on the wool production of merino sheep". *Aust. Vet. J.* **46** (8): 361–365. doi:10.1111/j.1751-0813.1970.tb15573.x. PMID 5471269.
- Haroun ET, Hillyer GV (March 1986). "Resistance to fascioliasis--a review". *Vet. Parasitol.* **20** (1–3): 63–93. doi:10.1016/0304-4017(86)90093-2. PMID 3518218.
- Doyle J.J. (1973). "The relationship between the duration of a primary infection and the subsequent development of an acquired resistance to experimental infections with *Fasciola hepatica* in calves". *Res. Vet. Sci.* **14** (1): 97–103. PMID 4707901.
- Boray JC (1969). "Experimental fascioliasis in Australia". *Adv. Parasitol. Advances in Parasitology.* **7**: 95–210. doi:10.1016/S0065-308X(08)60435-2. ISBN 978-0-12-031707-3. PMID 4935272.
- Phiri IK, Phiri AM, Harrison LJ (November 2006). "Serum antibody isotype responses of *Fasciola*-infected sheep and cattle to excretory and secretory products of *Fasciola* species". *Vet. Parasitol.* **141** (3–4): 234–42. doi:10.1016/j.vetpar.2006.05.019. PMID 16797844.
- Merck Veterinary Manual - Infectious Necrotic Hepatitis (<http://www.merckvetmanual.com/>)
- "CDC - DPDx - Fascioliasis". *www.cdc.gov*. Retrieved 2015-07-16.
- Torgerson, P; Claxton J (1999). "Epidemiology and control". In Dalton, JP. *Fasciolosis*. Wallingford, Oxon, UK: CABI Pub. pp. 113–49. ISBN 0-85199-260-9.
- Sakaguchi, Y. (1980). "Karyotype and gametogenesis of the common liver fluke, *Fasciola* sp., in Japan. Jap". *J. Parasitol.* **29**: 507–513.

26. Itagaki T, Tsutsumi K (May 1998). "Triploid form of *Fasciola* in Japan: genetic relationships between *Fasciola hepatica* and *Fasciola gigantica* determined by ITS-2 sequence of nuclear rDNA". *Int. J. Parasitol.* **28** (5): 777–81. doi:10.1016/S0020-7519(98)00037-X. PMID 9650058.
27. Singh, K.P.; Srivastava, V.K.; Prasad, A.; Pandey, A.P. (1994). "Pathology due to *Fasciola jacksoni* in Indian elephants *Elephas indicus*". *Ind. J. Anim. Scien.* **64**: 802–804.
28. Chen, M.G., Mott, K.E., 1990. "Progress in assessment of morbidity due to *Fasciola hepatica* infection: a review of recent literature". *Trop. Dis. Bull.* **87**, R1–R38.
29. Mas-Coma, S.; Rodriguez, A.; Bargues, M.D.; Valero, M.A.; Coello, J.; Angles, R. (1998). "Secondary reservoir role of domestic animals other than sheep and cattle in fascioliasis transmission on the northern Bolivian Altiplano". *Res. Rev. Parasitol.* **57**: 39–46.
30. Mas-Coma, S.; Fons, R.; Feliu, C.; Bargues, M.D.; Valero, M.A.; Galán-Puchades, M.T. (1988). "Small mammals as natural definitive hosts of the liver fluke, *Fasciola hepatica* Linnaeus, 1758 (Trematoda: Fasciolidae): a review and two new records of epidemiologic interest on the island of Corsica". *Rivista di Parassitologia.* **5**: 73–78.
31. Menard, A.; Agoulon, A.; L'Hostis, M.; Rondelaud, D.; Collard, S.; Chauvin, A. (2001). "Myocastor coypus as a reservoir host of *Fasciola hepatica* in France". *Vet. Res.* **32** (5): 499–508. doi:10.1051/vetres:2001141. PMID 11592619.
32. Markell, E.K., Voge, M., 1999. *Medical Parasitology*, eighth ed.. Saunders Company Publication, pp. 185–188.
33. Bjorland, J.; Bryan, R.T.; Strauss, W.; Hillyer, G.V.; McAuley, J.B. (1995). "An outbreak of acute fascioliasis among Aymara Indians in the Bolivian Altiplano". *Clin. Infect. Dis.* **21** (5): 1228–1233. doi:10.1093/clinids/21.5.1228. PMID 8589147.
34. Taira, N.; Yoshifuji, H.; Boray, J.C. (1997). "Zoonotic potential of infection with *Fasciola* spp. by consumption of freshly prepared raw liver containing immature flukes". *Int. J. Parasitol.* **27** (7): 775–779. doi:10.1016/S0020-7519(97)00038-6. PMID 9279579.
35. Graczyk, TK; Fried B (1999). "Development of *Fasciola hepatica* in the intermediate host". In Dalton, JP. *Fasciolosis*. Wallingford, Oxon, UK: CABI Pub. pp. 31–46. ISBN 0-85199-260-9.
36. van Milligen FJ, Cornelissen JB, Bokhout BA (August 1998). "Location of induction and expression of protective immunity against *Fasciola hepatica* at the gut level: a study using an ex vivo infection model with ligated gut segments". *J. Parasitol.* The Journal of Parasitology, Vol. 84, No. 4. **84** (4): 771–7. doi:10.2307/3284586. JSTOR 3284586. PMID 9714209.
37. Chauvin A, Bouvet G, Boulard C (October 1995). "Humoral and cellular immune responses to *Fasciola hepatica* experimental primary and secondary infection in sheep". *Int. J. Parasitol.* **25** (10): 1227–41. doi:10.1016/0020-7519(95)00039-5. PMID 8557470.
38. Martínez-Moreno A, Martínez-Moreno FJ, Acosta I, Gutiérrez PN, Becerra C, Hernández S (1997). "Humoral and cellular immune responses to experimental *Fasciola hepatica* infections in goats". *Parasitol. Res.* **83** (7): 680–6. doi:10.1007/s004360050319. PMID 9272558. Archived from the original on 2001-09-11.
39. Roberts JA, Estuningsih E, Wiedosari E, Spithill TW (December 1997). "Acquisition of resistance against *Fasciola gigantica* by Indonesian thin tail sheep". *Vet. Parasitol.* **73** (3–4): 215–24. doi:10.1016/S0304-4017(97)00119-2. PMID 9477508.
40. Wamae, L.W., 1996. Comparative pathogenesis and immunochemistry analysis of *Fasciola gigantica* infection in cattle and sheep. PhD Thesis. University of Edinburgh.
41. Hillyer, GV (1988). "Fascioliasis and fasciolopsiasis". In A. Turano; Balows, Albert; M. Ohashi. *Laboratory diagnosis of infectious diseases: principles and practices*. 1: Bacterial, mycotic, and parasitic diseases. Berlin: Springer-Verlag. pp. 856–62. ISBN 0-387-96755-9.
42. Hillyer, GV (1999). "Immunodiagnosis of human and animal fasciolosis". In Dalton JP. *Fasciolosis*. Wallingford, Oxon, UK: CABI Pub. pp. 435–47. ISBN 0-85199-260-9.
43. O'Neill SM, Parkinson M, Strauss W, Angles R, Dalton JP (April 1998). "Immunodiagnosis of *Fasciola hepatica* infection (fascioliasis) in a human population in the Bolivian Altiplano using purified cathepsin L cysteine proteinase". *Am. J. Trop. Med. Hyg.* **58** (4): 417–23. PMID 9574785.
44. Zimmerman GL, Jen LW, Cerro JE, Farnsworth KL, Wescott RB (December 1982). "Diagnosis of *Fasciola hepatica* infections in sheep by an enzyme-linked immunosorbent assay". *Am. J. Vet. Res.* **43** (12): 2097–100. PMID 7165155.

45. Duménigo BE, Espino AM, Finlay CM, Mezo M (March 2000). "Kinetics of antibody-based antigen detection in serum and faeces of sheep experimentally infected with *Fasciola hepatica*". *Vet. Parasitol.* **89** (1–2): 153–61. doi:10.1016/S0304-4017(00)00206-5. PMID 10729655.
46. Savioli L, Chitsulo L, Montresor A (1999). "New opportunities for the control of fascioliasis". *Bull. World Health Organ.* **77** (4): 300. PMC 2557651 . PMID 10327707.
47. Overend DJ & Bowen FL (1995). "Resistance of *Fasciola hepatica* to triclabendazole". *Austral Vet J.* **72** (7): 275–276. doi:10.1111/j.1751-0813.1995.tb03546.x. PMID 8534235.
48. Mulcahy G, Dalton JP (1998). "Vaccines in control of liver fluke infections in ruminants: current status and prospects". *Irish Vet J.* **51**: 520–525.
49. Schubert S, Phetsouvanh R (1990). "Praziquantel weitgehend unwirksam: Behandlung des *Fasciola hepatica*-Befalles (grosser Leberegel)". *Z Arztl Fortbild (Jena)*. **84** (14): 705–7. PMID 2264356.
50. Price TA, Tuazon CU, Simon GL (1993). "Fascioliasis: case reports and review.". *Clin Infect Dis.* **17** (3): 426–30. doi:10.1093/clinids/17.3.426. PMID 8218685.
51. Rossignol JF, Abaza H, Friedman H (1998). "Successful treatment of human fascioliasis with nitazoxanide". *Trans. R. Soc. Trop. Med. Hyg.* **92** (1): 103–4. doi:10.1016/S0035-9203(98)90974-9. PMID 9692168.
52. Ramachandran, A. (2000). *Pharmacology Recall*.
53. See, for example, Soliman, OE et al. (2004). "Evaluation of myrrh (Mirazid) therapy in fascioliasis and intestinal schistosomiasis in children: immunological and parasitological study". *J Egypt Soc Parasitol.* 2004 Dec. 34 (3):941-66.PubMed.gov (http://www.ncbi.nlm.nih.gov/pubmed/15587320)
54. Danis, M., Nozais, J.P., Chandener, J., 1985. "La distomatose à *Fasciola hepatica*, II: La fasciolose humaine en France". *Action Vet.* 907.
55. Yilmaz H, Gödekmerdan A (October 2004). "Human fasciolosis in Van Province, Turkey". *Acta Trop.* **92** (2): 161–2. doi:10.1016/j.actatropica.2004.04.009. PMID 15350869.
56. Demirci, M., 2003. İnsanlarda epidemiyoloji. In: Tinar, R., Korkmaz, M. (Eds.), *Fasciolosis. Türkiye Parazitoloji Dernēgi, META Basım, İzmir*, pp. 343–358 (in Turkish).
57. Fairweather I, Boray JC (September 1999). "Fasciolicides: efficacy, actions, resistance and its management". *Vet. J.* **158** (2): 81–112. doi:10.1053/tvjl.1999.0377. PMID 10489266.
58. Overend DJ, Bowen FL (July 1995). "Resistance of *Fasciola hepatica* to triclabendazole". *Aust. Vet. J.* **72** (7): 275–6. doi:10.1111/j.1751-0813.1995.tb03546.x. PMID 8534235.
59. O'Brien, D.J., 1998. Fasciolosis: a threat to livestock. *Irish Vet. J.* 51, 539–541.
60. Mitchell GB, Maris L, Bonniwell MA (October 1998). "Triclabendazole-resistant liver fluke in Scottish sheep". *Vet. Rec.* **143** (14): 399. PMID 9802201.
61. Moll L, Gaasenbeek CP, Vellema P, Borgsteede FH (July 2000). "Resistance of *Fasciola hepatica* against triclabendazole in cattle and sheep in The netherlands". *Vet. Parasitol.* **91** (1–2): 153–8. doi:10.1016/S0304-4017(00)00267-3. PMID 10889368.
62. Ibarra F, Vera Y, Quiroz H, et al. (February 2004). "Determination of the effective dose of an experimental fasciolicide in naturally and experimentally infected cattle". *Vet. Parasitol.* **120** (1–2): 65–74. doi:10.1016/j.vetpar.2003.12.005. PMID 15019144.
63. GMA NEWS.TV, Rise in animal liver fluke cases alarms South Cotabato (http://www.gmanews.tv/story/59646/SunStar-Rise-in-animal-liver-fluke-cases-alarms-South-Cotabato)

External links

- Fasciolosis Overview (http://www.dpd.cdc.gov/dpdx/HTML/Fascioliasis.htm) at CDC
- Immunodiagnosis of fasciolosis in Bolivian Altiplano (http://www.ajtmh.org/cgi/content/abstract/58/4/417?ck=nck)
- Fasciolosis (http://www.stanford.edu/class/humbio103/ParaSites2001/fascioliasis/Fasciola.htm#transmission)
- Pictures of adult flukes (http://www.k-state.edu/parasitology/625tutorials/Hepatica.html)

- Pictures of *F. hepatica* eggs (<http://www.k-state.edu/parasitology/625tutorials/Fasciola02.html>)

Retrieved from "<https://en.wikipedia.org/w/index.php?title=Fasciolosis&oldid=757324048>"

Categories: Helminthiases | Veterinary helminthology | Animal diseases

- This page was last modified on 30 December 2016, at 01:26.
- Text is available under the Creative Commons Attribution-ShareAlike License; additional terms may apply. By using this site, you agree to the Terms of Use and Privacy Policy. Wikipedia® is a registered trademark of the Wikimedia Foundation, Inc., a non-profit organization.