

# Woodland

From Wikipedia, the free encyclopedia

**Woodland** ˈwʊdlənd<sup>ⓘ</sup> is a low-density forest forming open habitats with plenty of sunlight and limited shade. Woodlands may support an understory of shrubs and herbaceous plants including grasses. Woodland may form a transition to shrubland under drier conditions or during early stages of primary or secondary succession. Higher density areas of trees with a largely closed canopy that provides extensive and nearly continuous shade are referred to as forests.

Conservationists have worked hard to preserve woodlands, because people are destroying animals habitats when building homes and other buildings. For example, the woodlands in Northwest Indiana have been preserved as part of the Indiana Dunes.<sup>[1][2][3]</sup>

*Woodland* is used in British woodland management to mean tree-covered areas which arose naturally and which are then managed, while forest is usually used in the British Isles to describe plantations, usually more extensive, or hunting Forests, which are a land use with a legal definition and may not be wooded at all.<sup>[4]</sup> The term "ancient woodland" is used in British nature conservation to refer to any wooded land that has existed since 1600, and often (though not always) for thousands of years, since the last Ice Age<sup>[4]</sup> (equivalent to the American term old-growth forest).

Woodlot is a closely related American term, which refers to a stand of trees generally used for firewood. While woodlots often technically have closed canopies, they are so small that light penetration from the edge makes them ecologically closer to woodland than forest.



Woodland in Belianske Tatras in Slovakia.

## Contents

- 1 Woodland ecoregions
  - 1.1 Tropical and subtropical grasslands, savannas, and shrublands
  - 1.2 Temperate grasslands, savannas, and shrublands
  - 1.3 Montane grasslands and shrublands
  - 1.4 Mediterranean forests, woodlands, and scrub
  - 1.5 Deserts and xeric shrublands
- 2 See also
- 3 References
- 4 External links

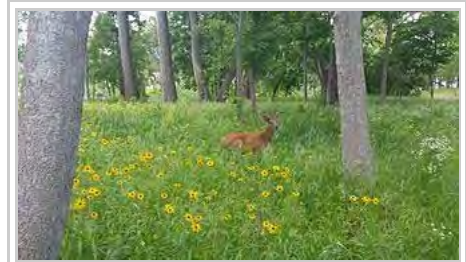
## Woodland ecoregions

## Tropical and subtropical grasslands, savannas, and shrublands

- Afrotropic ecozone
  - Angolan Miombo woodlands (Angola)
  - Angolan Mopane woodlands (Angola, Namibia)
  - Central Zambezian Miombo woodlands (Angola, Burundi, Democratic Republic of the Congo, Malawi, Tanzania, Zambia)
  - Eastern Miombo woodlands (Mozambique, Tanzania)
  - Kalahari Acacia-Baikiaea woodlands (Botswana, Namibia, South Africa, Zimbabwe)
  - Zambezian and Mopane woodlands (Botswana, Malawi, Mozambique, Namibia, South Africa, Swaziland, Zambia, Zimbabwe)
  - Zambezian Baikiaea woodlands (Angola, Botswana, Namibia, Zambia, Zimbabwe)
- Neotropic ecozone
  - Cerrado woodlands and savannas (Bolivia, Brazil, Paraguay)



A woodland ecosystem at Morton Arboretum in Illinois



An open woodland in Northern Illinois supporting an herbaceous understory of forbs and grasses

## Temperate grasslands, savannas, and shrublands

- Afrotropic Ecozone
  - Al Hajar Al Gharbi montane woodlands (Oman)
- Palearctic ecozone
  - Gissaro-Alai open woodlands (Kyrgyzstan, Tajikistan, Uzbekistan)

## Montane grasslands and shrublands

- Afrotropic ecozone
  - Angolan Scarp savanna and woodlands (Angola)
  - Drakensberg alti-montane grasslands and woodlands (Lesotho, South Africa)
  - Drakensberg montane grasslands, woodlands and forests (Lesotho, South Africa, Swaziland)
  - East African montane moorlands (Kenya, Sudan, Tanzania, Uganda)
  - Ethiopian montane grasslands and woodlands (Ethiopia)
- Palearctic ecozone
  - Kopet Dag woodlands and forest steppe (Iran, Turkmenistan)



Limber Pine woodland in the Toiyabe Range of central Nevada

## Mediterranean forests, woodlands, and scrub

- Australasia ecozone
  - Coolgardie woodlands (Australia)
  - Mount Lofty woodlands (Australia)
  - Murray-Darling woodlands and mallee (Australia)
  - Naracoorte woodlands (Australia)
  - Southwest Australia woodlands (Australia)
- Nearctic ecozone
  - California chaparral and woodlands (United States)
- Palearctic ecozone
- Baccanico (berrywood) an area with a high density of all sorts of berry ("berry" in Italian "bacca") trees.
  - Canary Islands dry woodlands and forests (Spain)
  - Mediterranean acacia-argania dry woodlands and succulent thickets (Morocco, Canary Islands (Spain))
  - Mediterranean dry woodlands and steppe (Algeria, Egypt, Libya, Morocco, Tunisia)
  - Mediterranean woodlands and forests (Algeria, Morocco, Tunisia)
  - Southeastern Iberian shrubs and woodlands (Spain)



Mediterranean eucalypt forest in Australia

## Deserts and xeric shrublands

- Afrotropic ecozone
  - East Saharan montane xeric woodlands (Chad, Sudan)
  - Madagascar succulent woodlands (Madagascar)
  - Somali montane xeric woodlands (Somalia)
  - Southwestern Arabian montane woodlands (Saudi Arabia, Yemen)
- Palearctic ecozone
  - Baluchistan xeric woodlands (Afghanistan, Pakistan)
  - Central Afghan Mountains xeric woodlands (Afghanistan)
  - Central Asian riparian woodlands (Kazakhstan)
  - North Saharan steppe and woodlands (Algeria, Egypt, Libya, Morocco Tunisia, Western Sahara)
  - Paropamisus xeric woodlands (Afghanistan)
  - South Saharan steppe and woodlands (Algeria, Chad, Mali, Mauritania, Niger, Sudan)
  - Tibesti-Jebel Uweinat montane xeric woodlands (Chad, Egypt, Libya, Sudan)
  - West Saharan montane xeric woodlands (Algeria, Mali, Mauritania, Niger)

## See also

- |                            |                         |  |
|----------------------------|-------------------------|--|
| ■ Agroforestry             | ■ Cloud forest          | ■ Forestry Commission  |
| ■ Ancient woodland         | ■ Chase (land)          | ■ History of the forest in Central Europe  |
| ■ Biomass                  | ■ Deforestation         | ■ Illegal logging  |
| ■ Biomass (ecology)        | ■ Dendrology            | ■ Intact forest landscape  |
| ■ Bioproduct               | ■ Dendrometry           | ■ Jungle (terrain)   |
| ■ Biosphere                | ■ Ecological succession | ■ Kelp forest (A forest made mostly if not entirely of Kelp; an underwater forest) |
| ■ Boreal forest            | ■ Forest dynamics       |  |
| ■ Canopy (biology)         | ■ Forest management     |  |
| ■ Clearcutting             | ■ Forest migration      |  |
| ■ Close to nature forestry | ■ Forest pathology      |  |

- List of countries by forest area
- List of old-growth forests
- List of superlative trees
- List of tree genera
- List of trees and shrubs by taxonomic family
- Lists of trees of the world
- Natural environment
- Natural landscape
- Old-growth forest (ancient forest, virgin forest, primary forest)
- Orchard
- Permaforestry
- Plantation (forestry)
- Rainforest
- REDD-plus
- Silviculture
- Subalpine forest
- Taiga
- Temperate broadleaf and mixed forests
- Temperate coniferous forests
- Tree
- Tree allometry
- Tree farm
- Tropical rainforest
- Tropical and subtropical coniferous forests
- Tropical and subtropical moist broadleaf forests
- Wildcrafting
- Wilderness
- Woodland management

## References

1. Smith, S. & Mark, S. (2006). Alice Gray, Dorothy Buell, and Naomi Svihla: Preservationists of Ogden Dunes. *The South Shore Journal*, 1. <http://www.southshorejournal.org/index.php/issues/volume-1-2006/78-journals/vol-1-2006/117-alice-gray-dorothy-buell-and-naomi-svihla-preservationists-of-ogden-dunes>
2. Smith, S. & Mark, S. (2009). The Historical Roots of the Nature Conservancy in the Northwest Indiana/Chicagoland Region: From Science to Preservation. *The South Shore Journal*, 3. <http://www.southshorejournal.org/index.php/issues/volume-3-2009/83-journals/vol-3-2009/75-the-historical-roots-of-the-nature-conservancy-in-the-northwest-indianachicagoland-region-from-science-to-preservation>
3. Smith, S. & Mark, S. (2007). The cultural impact of a museum in a small community: The Hour Glass of Ogden Dunes. *The South Shore Journal*, 2. <http://www.southshorejournal.org/index.php/issues/volume-2-2007/82-journals/vol-2-2007/104-the-cultural-impact-of-a-museum-in-a-small-community-the-hour-glass-in-ogden-dunes>
4. Rackham, Oliver (2006). *Woodlands (New Naturalist 100)*. London: HarperCollins. ISBN 9780007202447.

## External links

Media related to Woodlands at Wikimedia Commons

- The UK Woodland Trust (<http://www.woodland-trust.org.uk/>)
- Woodland Bond (<http://www.woodlandbond.co.uk/>)

Retrieved from "https://en.wikipedia.org/w/index.php?title=Woodland&oldid=749916895"

Categories: Forests | Habitats

- 
- This page was last modified on 16 November 2016, at 21:12.
  - Text is available under the Creative Commons Attribution-ShareAlike License; additional terms may apply. By using this site, you agree to the Terms of Use and Privacy Policy. Wikipedia® is a registered trademark of the Wikimedia Foundation, Inc., a non-profit organization.