



DEPARTMENT: AGRICULTURE

How medicine should be used



2001

Compiled by Directorate Communication,, Department of Agriculture
in cooperation with
ARC–Onderstepoort Veterinary Institute

Printed and published by Department of Agriculture
and obtainable from Resource Centre, Directorate Communication
Private Bag X144, Pretoria 0001, South Africa

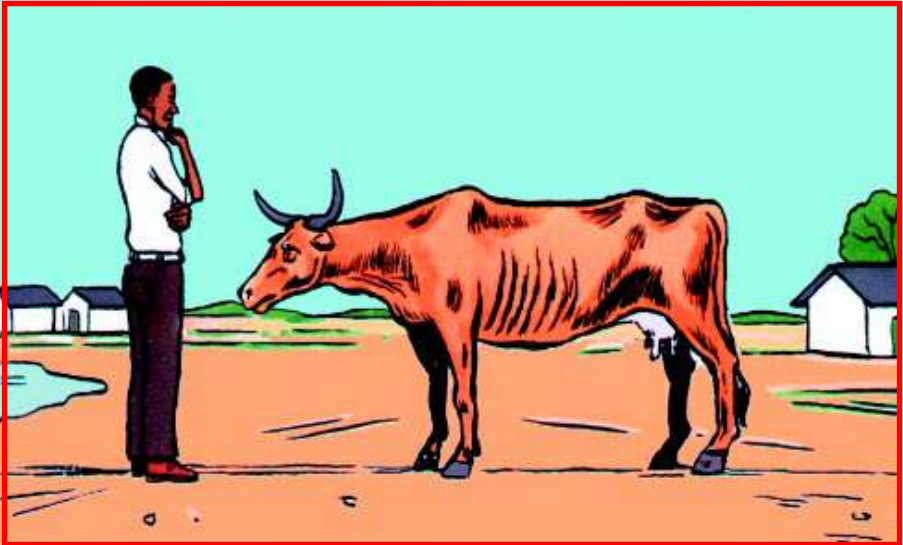
Illustrations by C. Seegers

This publication is available on the web: www.nda.agric.za/publications



Information provided by
Animal Health for Developing Farmers
ARC–Onderstepoort Veterinary Institute
Private Bag X05, Onderstepoort 0110
Tel. (012) 529 9158

How medicine should be used



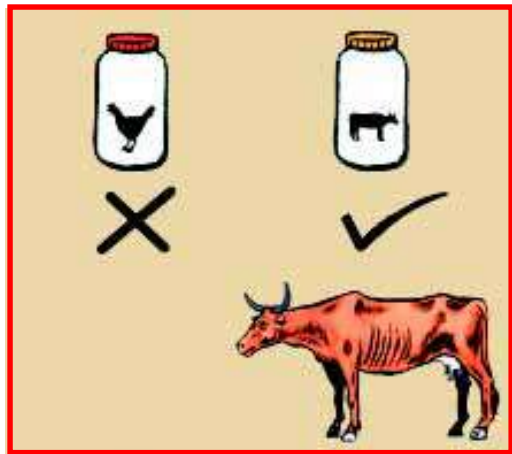
Make sure that you are using the right medicine for the right reason. Medicine can be used for PREVENTION (for example dewormers and dips) or for TREATMENT. You need to know what disease you are treating or preventing.





Always read the instructions that go with the medicine, or ask someone to explain them to you.

Make sure that the medicine can be used for this type of animal. For example, chicken medicine cannot be used for cattle.

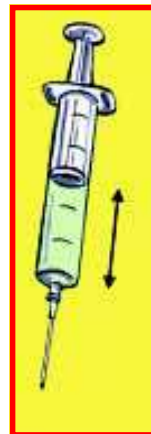
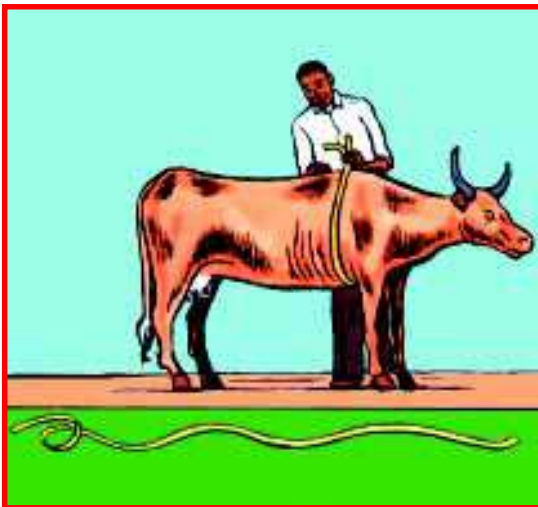


Check the expiry date. If it is past the expiry date the medicine will not work properly.

Make sure that the medicine has been stored properly in the store and at home before you use it. Some medicine needs to be kept cool and in the shade.

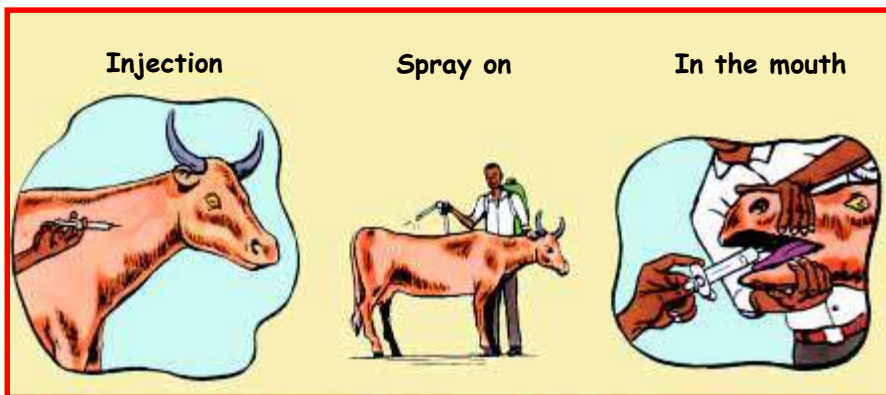


It is important to give the right dose. Too little may not work, and too much may be harmful. To estimate the weight of your animal you can use a GIRTH MEASUREMENT TAPE.



Bigger animals take bigger doses.

You can get a girth measurement tape from your farmer co-operative store.

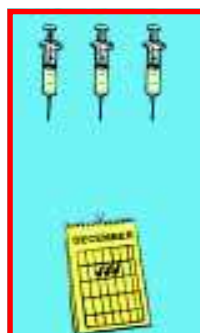


Make sure that you use the right method when giving the medicine. The instructions will inform you how.

If using a needle and syringe for injecting, this should be new or boiled so that it is clean and germs are killed. Do not use the same needle on different animals.



Continue to give the medicine for a long enough period or else it will not work. For example, some injections need to be given for 3 days.



Medicine is spread through the animal's body and milk.



Wait until after the medicine's **WITHDRAWAL PERIOD** (written in the instructions) before using the animal's meat or milk. Taking in animal medicine can make humans sick.



Keep medicines away from children because they could be harmful.

**Contact your animal health technician,
state or private veterinarian**

or

Animal Health for Developing Farmers
ARC-Onderstepoort Veterinary Institute
Private Bag X05, Onderstepoort 0110
Tel. (012) 529 9158

or

Resource Centre, Department of Agriculture
Tel. (012) 319 7141/7085