

# Alternator

From Wikipedia, the free encyclopedia

An **alternator** is an electrical generator that converts mechanical energy to electrical energy in the form of alternating current.<sup>[2]</sup> For reasons of cost and simplicity, most alternators use a rotating magnetic field with a stationary armature.<sup>[3]</sup> Occasionally, a linear alternator or a rotating armature with a stationary magnetic field is used. In principle, any AC electrical generator can be called an alternator, but usually the term refers to small rotating machines driven by automotive and other internal combustion engines. An alternator that uses a permanent magnet for its magnetic field is called a magneto. Alternators in power stations driven by steam turbines are called turbo-alternators. Large 50 or 60 Hz three phase alternators in power plants generate most of the world's electric power, which is distributed by electric power grids.<sup>[4]</sup>



Early 20th-century alternator made by Ganz Works in 1909 in Budapest, Hungary, in the power generating hall of the biggest hydroelectric station of the Russian Empire (photograph by Prokudin-Gorsky, 1911)<sup>[1]</sup>

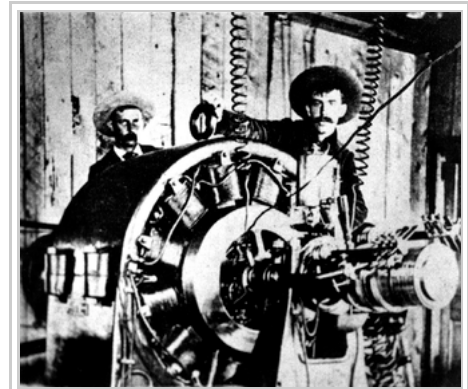
## Contents

- 1 History
- 2 Principle of operation
- 3 Synchronous speeds
- 4 Classifications
  - 4.1 By excitation
    - 4.1.1 Direct connected DC generator
    - 4.1.2 Transformation and rectification
    - 4.1.3 Brushless alternators
  - 4.2 By number of phases
  - 4.3 By rotating part
- 5 Specific applications
  - 5.1 Electric generators
  - 5.2 Automotive alternators
  - 5.3 Diesel electric locomotive alternators
  - 5.4 Marine alternators
  - 5.5 Radio alternators
- 6 See also
- 7 Notes
- 8 References
- 9 External links

## History

Alternating current generating systems were known in simple forms from the discovery of the magnetic induction of electric current in the 1830s. Rotating generators naturally produced alternating current but, since there was little use for it, it was normally converted into direct current via the addition of a commutator in the generator.<sup>[8]</sup> The early machines were developed by pioneers such as Michael Faraday and Hippolyte Pixii. Faraday developed the "rotating rectangle", whose operation was *heteropolar* – each active conductor passed successively through regions where the magnetic field was in opposite directions.<sup>[9]</sup> Lord Kelvin and Sebastian Ferranti also developed early alternators, producing frequencies between 100 and 300 Hz.

The late 1870's saw the introduction of first large scale electrical systems with central generation stations to power Arc lamps, used to light whole streets, factory yards, or the interior of large warehouses. Some, such as Yablochkov arc lamps introduced in 1878, ran better on alternating current, and the development of these early AC generating systems was accompanied by the first use of the word "alternator".<sup>[10][11]</sup> Supplying the proper amount of voltage from generating stations in these early systems was left up to the engineer's skill in "riding the load".<sup>[12]</sup> In 1883 the Ganz Works invented the constant voltage generator<sup>[13]</sup> that could produce a stated output voltage, regardless of the value of the actual load.<sup>[14]</sup> The introduction of transformers in the mid-1880s led to the widespread use of alternating current and the use of alternators needed to produce it.<sup>[15]</sup> After 1891, polyphase alternators were introduced to supply currents of multiple differing phases.<sup>[16]</sup> Later alternators were designed for various alternating current frequencies between sixteen and about one hundred hertz, for use with arc lighting, incandescent lighting and electric motors.<sup>[17]</sup> Specialized radio frequency alternators like the Alexanderson alternator were developed as longwave radio transmitters around World War 1 and used in a few high power wireless telegraphy stations before vacuum tube transmitters replaced them.



In what is considered the first industrial use of alternating current in 1891, workmen pose with a Westinghouse alternator at the Ames Hydroelectric Generating Plant. This alternator was used as a generator producing 3000 volt, 133 hertz, single-phase AC, and an identical one 3 miles away was used as an AC motor.<sup>[5][6][7]</sup>

## Principle of operation

A conductor moving relative to a magnetic field develops an electromotive force (EMF) in it (Faraday's Law). This emf reverses its polarity when it moves under magnetic poles of opposite polarity. Typically, a rotating magnet, called the rotor turns within a stationary set of conductors wound in coils on an iron core, called the stator. The field cuts across the conductors, generating an induced EMF (electromotive force), as the mechanical input causes the rotor to turn.

The rotating magnetic field induces an AC voltage in the stator windings. Since the currents in the stator windings vary in step with the position of the rotor, an alternator is a synchronous generator.<sup>[3]</sup>

The rotor's magnetic field may be produced by permanent magnets, or by a field coil electromagnet. Automotive alternators use a rotor winding which allows control of the alternator's generated voltage by varying the current in the rotor field winding. Permanent magnet machines avoid the loss due to magnetizing current in the rotor, but are restricted in size, due to the cost of the magnet material. Since the permanent

magnet field is constant, the terminal voltage varies directly with the speed of the generator. Brushless AC generators are usually larger than those used in automotive applications.

An automatic voltage control device controls the field current to keep output voltage constant. If the output voltage from the stationary armature coils drops due to an increase in demand, more current is fed into the rotating field coils through the voltage regulator (VR). This increases the magnetic field around the field coils which induces a greater voltage in the armature coils. Thus, the output voltage is brought back up to its original value.

Alternators used in central power stations also control the field current to regulate reactive power and to help stabilize the power system against the effects of momentary faults. Often there are three sets of stator windings, physically offset so that the rotating magnetic field produces a three phase current, displaced by one-third of a period with respect to each other.

## Synchronous speeds

One cycle of alternating current is produced each time a pair of field poles passes over a point on the stationary winding. The relation between speed and frequency is  $N = 120f/P$ , where  $f$  is the frequency in Hz (cycles per second).  $P$  is the number of poles (2,4,6...) and  $N$  is the rotational speed in revolutions per minute (RPM). Very old descriptions of alternating current systems sometimes give the frequency in terms of alternations per minute, counting each half-cycle as one *alternation*; so 12,000 alternations per minute corresponds to 100 Hz.

The output frequency of an alternator depends on the number of poles and the rotational speed. The speed corresponding to a particular frequency is called the *synchronous speed* for that frequency. This table<sup>[18]</sup> gives some examples:

Poles	RPM for 50 Hz	RPM for 60 Hz	RPM for 400 Hz
2	3,000	3,600	24,000
4	1,500	1,800	12,000
6	1,000	1,200	8,000
8	750	900	6,000
10	600	720	4,800
12	500	600	4,000
14	428.6	514.3	3,429
16	375	450	3,000
18	333.3	400	2,667
20	300	360	2,400
40	150	180	1,200

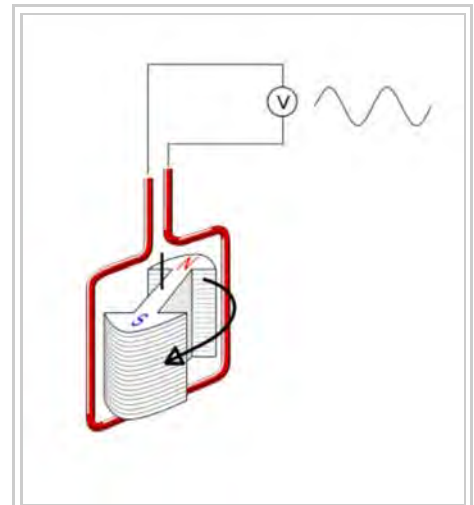


Diagram of a simple alternator with a rotating magnetic core (rotor) and stationary wire (stator) also showing the current induced in the stator by the rotating magnetic field of the rotor.

## Classifications

Alternators may be classified by method of excitation, number of phases, the type of rotation, and their application.<sup>[19]</sup>

### By excitation

There are two main ways to produce the magnetic field used in the alternators, by using permanent magnets which create their own persistent magnetic field or by using field coils. The alternators that use permanent magnets are specifically called magnetos. In other alternators, wound field coils form an electromagnet to produce the rotating magnetic field.

All devices that use permanent magnets and produce alternating current are called PMA or permanent magnet alternator. A "permanent magnet generator" (PMG) may produce either alternating current, or direct current if it has a commutator. If the permanent magnet device makes only AC current, it is correctly called a PMA.

### Direct connected DC generator

This method of excitation consists of a smaller direct-current (DC) generator fixed on the same shaft with the alternator. The DC generator generates a small amount of electricity just enough to *excite* the field coils of the connected alternator to generate electricity. A variation of this system is a type of alternator which uses direct current from the battery for excitation, after which the alternator is self-excited.<sup>[19]</sup>

### Transformation and rectification

This method depends on residual magnetism retained in the iron core to generate weak magnetic field which would allow weak voltage to be generated. The voltage is used to excite the field coils for the alternator to generate stronger voltage as part of its *build up* process. After the initial AC voltage buildup, the field is supplied with rectified voltage from the alternator.<sup>[19]</sup>

### Brushless alternators

A brushless alternator is composed of two alternators built end-to-end on one shaft. Smaller brushless alternators may look like one unit but the two parts are readily identifiable on the large versions. The larger of the two sections is the main alternator and the smaller one is the exciter. The exciter has stationary field coils and a rotating armature (power coils). The main alternator uses the opposite configuration with a rotating field and stationary armature. A bridge rectifier, called the rotating rectifier assembly, is mounted on the rotor. Neither brushes nor slip rings are used, which reduces the number of wearing parts. The main alternator has a rotating field as described above and a stationary armature (power generation windings).

Varying the amount of current through the stationary exciter field coils varies the 3-phase output from the exciter. This output is rectified by a rotating rectifier assembly, mounted on the rotor, and the resultant DC supplies the rotating field of the main alternator and hence alternator output. The result of all this is that a small DC exciter current indirectly controls the output of the main alternator.

Early Honda four-cylinder motorcycles (CB750F, CB350F, CB500F, CB550F) used a brushless Hitachi 200W alternator. This had a fixed "rotor" winding on the outer cover; the outer end of the iron core was a disc that closed the outer rotor pole. The rotor comprised two intermeshed six-pole "claws" welded to and spaced apart

by a non-magnetic ring. It bolted directly to the end of the five-bearing crank by the hub of one pole. The other pole had an open end to receive the stator winding. The outer cover also mounted the three-phase stator windings. The magnetic circuit had two auxiliary air gaps between the rotor and its stationary core. The regulator was a conventional automotive type with vibrating points. As it had no slip rings, it was very compact and rugged, but due to the auxiliary air gaps, it had poor efficiency.

## By number of phases

Another way to classify alternators is by the number of phases of their output voltage. The output can be single phase, or polyphase. Three-phase alternators are the most common, but polyphase alternators can be two phase, six phase, or more.<sup>[19]</sup>

## By rotating part

The revolving part of alternators can be the armature or the magnetic field. The revolving armature type has the armature wound on the rotor, where the winding moves through a stationary magnetic field. The revolving armature type is not often used.<sup>[19]</sup> The revolving field type has magnetic field on the rotor to rotate through a stationary armature winding. The advantage is that then the rotor circuit carries much less power than the armature circuit, making the slip ring connections smaller and less costly; only two contacts are needed for the direct-current rotor, whereas often a rotor winding has three phases and multiple sections which would each require a slip ring connection. The stationary armature can be wound for any convenient medium voltage level, up to tens of thousands of volts; manufacture of slip ring connections for more than a few thousand volts is costly and inconvenient.

## Specific applications

### Electric generators

Most power generation stations use synchronous machines as their generators. Connection of these generators to the utility grid requires synchronization conditions to be met.<sup>[20]</sup>

### Automotive alternators

Alternators are used in modern automobiles to charge the battery and to power the electrical system when its engine is running.

Until the 1960s, automobiles used DC dynamo generators with commutators. With the availability of affordable silicon diode rectifiers, alternators were used instead.

### Diesel electric locomotive alternators

In later diesel electric locomotives and diesel electric multiple units, the prime mover turns an alternator which provides electricity for the traction motors (AC or DC).

The traction alternator usually incorporates integral silicon diode rectifiers to provide the traction motors with up to 1200 volts DC (DC traction, which is used directly) or the common inverter bus (AC traction, which is first inverted from dc to three-phase ac).

The first diesel electric locomotives, and many of those still in service, use DC generators as, before silicon power electronics, it was easier to control the speed of DC traction motors. Most of these had two generators: one to generate the excitation current for a larger main generator.

Optionally, the generator also supplies head end power (HEP) or power for electric train heating. The HEP option requires a constant engine speed, typically 900 RPM for a 480 V 60 Hz HEP application, even when the locomotive is not moving.

## Marine alternators

Marine alternators used in yachts are similar to automotive alternators, with appropriate adaptations to the salt-water environment. Marine alternators are designed to be explosion proof so that brush sparking will not ignite explosive gas mixtures in an engine room environment. They may be 12 or 24 volt depending on the type of system installed. Larger marine diesels may have two or more alternators to cope with the heavy electrical demand of a modern yacht. On single alternator circuits, the power may be split between the engine starting battery and the domestic or house battery (or batteries) by use of a split-charge diode (battery isolator) or a voltage-sensitive relay.

## Radio alternators

High frequency alternators of the variable-reluctance type were applied commercially to radio transmission in the low-frequency radio bands. These were used for transmission of Morse code and, experimentally, for transmission of voice and music. In the Alexanderson alternator, both the field winding and armature winding are stationary, and current is induced in the armature by virtue of the changing magnetic reluctance of the rotor (which has no windings or current carrying parts). Such machines were made to produce radio frequency current for radio transmissions, although the efficiency was low.

## See also

- Bottle dynamo
- Dynamo
- Electric generator
- Engine-generator
- Folsom Powerhouse State Historic Park
- Hub dynamo
- Induction generator, using regular induction (asynchronous) motor
- Jedlik's dynamo
- Linear alternator
- Magneto
- Polyphase coil
- Revolving armature alternator
- Single-phase generator
- Flux switching alternator



Alternator mounted on an automobile engine with a serpentine belt pulley

## Notes

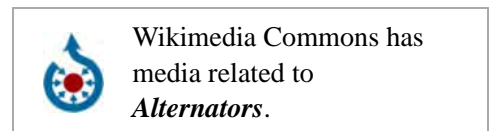
- "Abraham Ganz at the Hindukush". *Poemas del río Wang*. Studiolum.
- Aylmer-Small, Sidney (1908). "Lesson 28: Alternators". *Electrical railroading; or, Electricity as applied to railroad transportation*. Chicago: Frederick J. Drake & Co. pp. 456–463.
- Gordon R. Selmon, *Magnetolectric Devices*, John Wiley and Sons, 1966 no ISBN pp. 391-393
- "List of Plug/Sockets and Voltage of Different Countries". *World Standards*. World Standards.
- D. M. Mattox, The Foundations of Vacuum Coating Technology, page 39 (<https://books.google.com/books?id=31O4upzTHQwC&pg=PA39&dq=In+1891+Telluride+westinghouse+induction+motor&hl=en&sa=X&ei=Qc3PUP-ZA--n0AHah4HwBA&sqi=2&ved=0CFMQ6AEwBA#v=onepage&q=In%201891%20Telluride%20westinghouse%20induction%20motor&f=false>)
- CHARLES C. BRITTON, An Early Electric Power Facility in Colorado, Colorado Magazine v49n3 Summer 1972, page 185 ([http://www.historycolorado.org/sites/default/files/files/Researchers/ColoradoMagazine\\_v49n3\\_Summer1972.pdf](http://www.historycolorado.org/sites/default/files/files/Researchers/ColoradoMagazine_v49n3_Summer1972.pdf))
- "Milestones:Ames Hydroelectric Generating Plant, 1891". *IEEE Global History Network*. IEEE. Retrieved 29 July 2011.
- Christopher Cooper, The Truth about Tesla: The Myth of the Lone Genius in the History of Innovation, Quarto Publishing Group USA – 2015, page 93
- Thompson, Sylvanus P., *Dynamo-Electric Machinery*. p. 7.
- Jill Jonnes, Empires of Light: Edison, Tesla, Westinghouse, And The Race To Electrify The World, Random House – 2004, page 47
- Christopher Cooper, The Truth about Tesla: The Myth of the Lone Genius in the History of Innovation, Quarto Publishing Group USA – 2015, page 93
- Donald Scott McPartland, Almost Edison: How William Sawyer and Others Lost the Race to Electrification, ProQuest – 2006, page 135
- American Society for Engineering Education (1995). *Proceedings, Part 2*. p. 1848.
- Robert L. Libbey (1991). *A Handbook of Circuit Math for Technical Engineers*. CRC Press. p. 22. ISBN 9780849374005.
- Thompson, Sylvanus P. "Milestones:Alternating Current Electrification, 1886". IEEE Global History Network. Retrieved 22 September 2013.
- Thompson, Sylvanus P., *Dynamo-Electric Machinery*. pp. 17
- Thompson, Sylvanus P., *Dynamo-Electric Machinery*. pp. 16
- The Electrical Year Book 1937, published by Emmott & Co. Ltd., Manchester, England, page 72
- Aviation Maintenance Technician Handbook—General (FAA-H-8083-30)* (PDF). Federal Aviation Administration. 2008. pp. 10\_160—10\_161. Retrieved 6 September 2013.
- Soft synchronization of dispersed generators to micro grids for smart grid applications (<http://ieeexplore.ieee.org/xpl/articleDetails.jsp?arnumber=6175812>)

## References

- Thompson, Sylvanus P., *Dynamo-Electric Machinery, A Manual for Students of Electrotechnics*, Part 1, Collier and Sons, New York, 1902
- White, Thomas H., "*Alternator-Transmitter Development (http://earlyradiohistory.us/sec008.htm) (1891–1920)*". EarlyRadioHistory.us.

## External links

- Alternators ([http://www.tpub.com/content/construction/14273/css/14273\\_47.htm](http://www.tpub.com/content/construction/14273/css/14273_47.htm)) at Integrated Publishing (TPub.com)
- Wooden Low-RPM Alternator (<http://www.otherpower.com/pmg2.html>), ForceField, Fort Collins, Colorado, USA



- Understanding 3 phase alternators ([http://www.windstuffnow.com/main/3\\_phase\\_basics.htm](http://www.windstuffnow.com/main/3_phase_basics.htm)) at WindStuffNow
- Alternator, Arc and Spark. The first Wireless Transmitters (<http://home.freeuk.net/dunckx/wireless/sparksnarcs/sparksnarcs.html>) (GOUTY homepage)

Retrieved from "https://en.wikipedia.org/w/index.php?title=Alternator&oldid=757898981"

Categories: Electrical generators | Energy conversion | Alternators

---

- This page was last modified on 2 January 2017, at 10:30.
- Text is available under the Creative Commons Attribution-ShareAlike License; additional terms may apply. By using this site, you agree to the Terms of Use and Privacy Policy. Wikipedia® is a registered trademark of the Wikimedia Foundation, Inc., a non-profit organization.