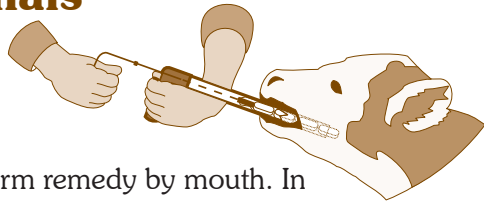




DEPARTMENT: AGRICULTURE  
REPUBLIC OF SOUTH AFRICA

## Step by step guide on how to dose your animals



---

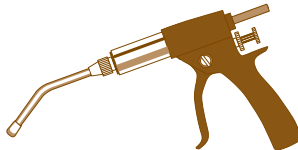
### What is dosing?

It is administration of a worm remedy by mouth. In recent years, worm remedies have been developed which can be administered by injection, but dosing is still the popular method of treating worms. Before you dose, you should read the instructions on the label of the medicine carefully, especially as they relate to dosage rates and take note of every special precaution. Dosage rate of an animal is determined by the weight of an animal. The dosage of medicine per unit weight appears on the label in millimetres.

---

### What is needed when dosing animals?

- ◆ Dosing gun
- ◆ Medicine
- ◆ Weigh band
- ◆ Nose holder



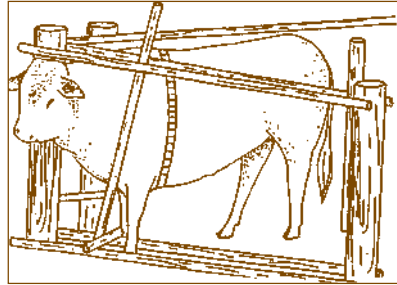
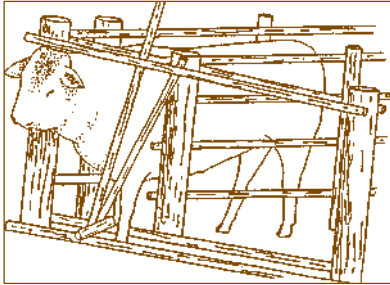
**Weigh band.** It is used to determine the weight of an animal. The weight obtained through the use of a weigh band is not good enough. Animals also have to be weighed to obtain an exact figure.

**Nose holder.** It is a pincers-like instrument used to restrain animals.

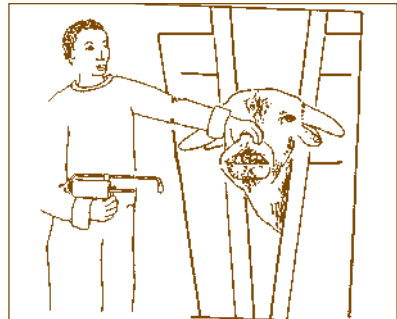
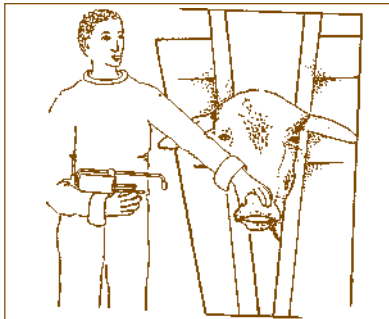
---

## How to dose your animals

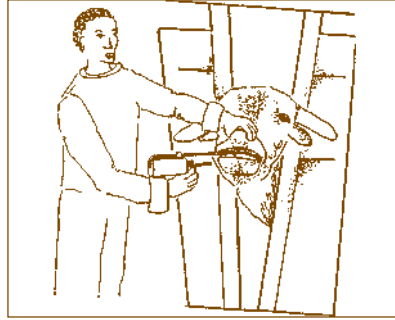
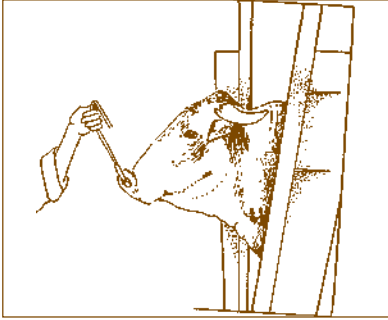
The sketches below will serve as a guide on how to dose animals.



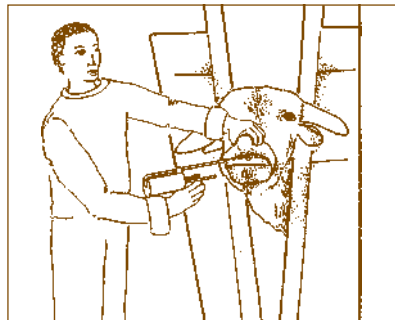
- ◆ Turn your fingernail and restrain the animal
- ◆ Estimate the weight of an animal by using the weigh band or weigh them to obtain their weight. Shake the bottle of the medicine before use. Draw the required quantity of medicine into the dosing gun or measure it out into the bottle



- ◆ Insert the thumb and finger of the left hand into the nose of the animal
- ◆ Lift the hand and tilt at the angle of 45 degrees from the horizontal



- ◆ If the animal is not used to handling, it may struggle and the nose holder will have to be used. Another person is required to hold onto the nose holder
- ◆ Insert the nozzle of the dosing gun, or the mouth of the bottle if you are using a bottle, through the side of the mouth in the gap between the incisor and molar teeth. Make sure that the nozzle is pointing towards the back of the throat and above the tongue. Push the plunger in deeper reasonably slowly to expel the medicine. If you are using a bottle, point the medicine in gently. Do not allow your assistant to hold the tongue of the animal, in order to keep the mouth open, as this will interfere with swallowing and the animal may choke
- ◆ Keep the plunger depressed until the nozzle is out of the mouth. If you pull out the plunger too quickly, some of the medicine in the mouth will be sucked back into the dosing gun
- ◆ Hold the head of the animal a few seconds to allow it to swallow any medicine still in the mouth



---

## Conclusion

It is of vital importance that farmers should regularly and timeously dose their livestock. Make sure that you apply the correct dosage by adhering to the instructions. Make sure that you read and understand the instructions, or, if you do not, ask help from a State vet or extension officers or animal health technicians in your area.

This publication is available on the web: [www.nda.agric.za/publications](http://www.nda.agric.za/publications)



2004

Compiled by Directorate Agricultural Information Services  
Department of Agriculture

Printed and published by  
Department of Agriculture  
and obtainable from

Resource Centre, Directorate Agricultural Information Services  
Private Bag X144, Pretoria 0001, South Africa