



CHAKRA & COLOUR	ASSOCIATED BODY PARTS	BALANCED ENERGY CHARACTERISTICS	EXCESSIVE CHAKRA ENERGY	DEFICIENT CHAKRA ENERGY	MALFUNCTION at PHYSICAL LEVEL.
First Chakra RED Base of spine	Spine, legs, teeth bones, nails, feet rectum, colon, Intestines, blood.	Centred, healthy, lively, affectionate, trusting, energetic, spiritual.	Egotistic, greedy, materialistic, domineering.	Lack confidence, weak, spacey, unfocused, and suicidal.	Obesity, constipation, arthritis, knee problems, Low stamina.
Second Chakra ORANGE Sacral	womb, kidneys, bladder, pelvic, lymph, Gastric juices.	Friendly, optimistic, creative, intuitive, sense of humour.	Aggressive, manipulative, overly ambitious, delusive.	Shy, timid, sensitive, fearful, resentful, frigid, passive.	Impotence, uterus problems, bladder, kidneys, Lower back pain.
Third Chakra YELLOW Solar Plexus	Lower back, abdomen, liver, spleen, and digestive & nerve system.	Outgoing, cheerful, relaxed, skilful, warm, and intelligent.	Judgmental, workaholic, perfectionist, Hyperactive.	Depressed, confused, insecure, and jealous.	Ulcers, diabetes, nervousness, bulimia, anorexia.
Fourth Chakra GREEN Heart	Heart, lungs, arms, hands, upper back, circulation, skin.	Compassionate, balanced, humanitarian.	Demanding, critical, possessive, Moody, controlling.	Paranoid, indecisive, unloved, fearful, worried.	Asthma, high blood pressure, lung disease, heart disease.
Fifth Chakra BLUE Throat	Neck, shoulders, jaw, ears, bronchial tubes.	Contented, good speaker, meditative, inspired.	Arrogant, talks too much, addictive, Self-righteous.	Scared, timid, quiet, weak, and inconsistent.	Sore throat, stiff neck, colds, thyroid, hearing problems.
Sixth Chakra INDIGO Third eye (Brow)	Eye, two hemispheres of the brain, sinuses, face.	Charismatic, receiver of guidance spiritually enlightened.	Proud, egotistic, manipulative, authoritarian.	Undisciplined, oversensitive, afraid of success.	Headaches, visual disturbances, nightmares.
Seventh Chakra WHITE Crown	Cortex, central nervous system.	Miracle worker, In touch with nature.	Psychotic, frustrated, destructive, depressed.	No spark of joy, can't make decisions.	Migraines, depression, alienation, inability to learn.



Small
Intest

Brain
Areas

Colon

Nose

Neck

Larynx

Lungs

Thyroid

Heart

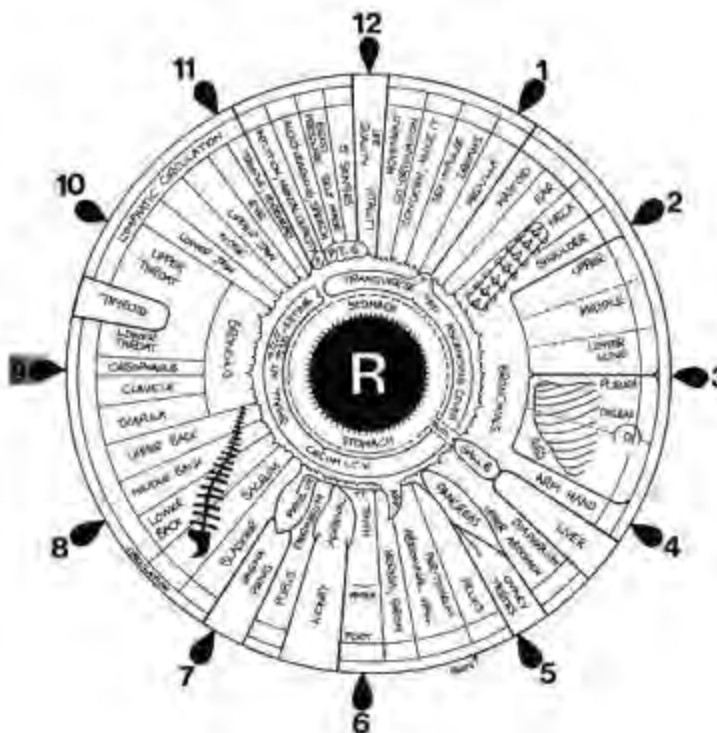
Spine

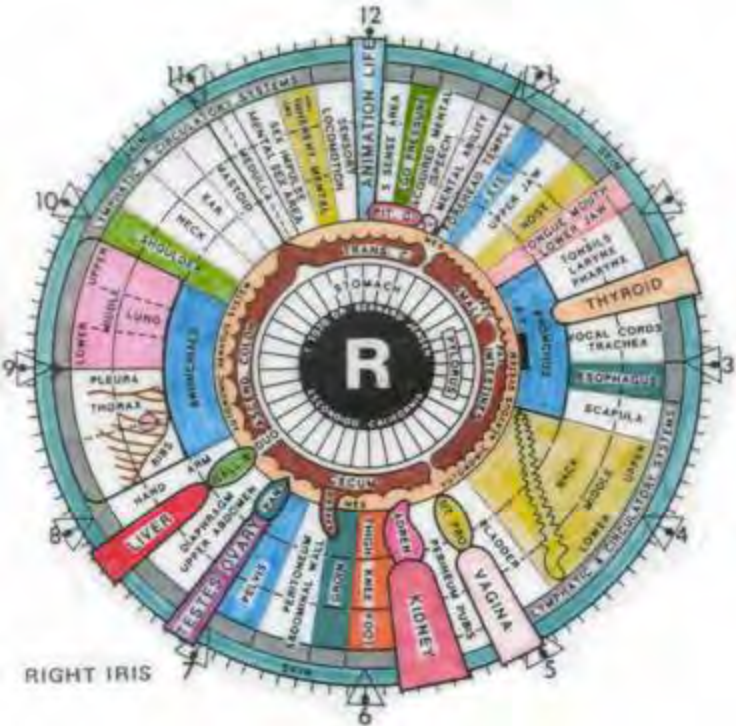
Spleen

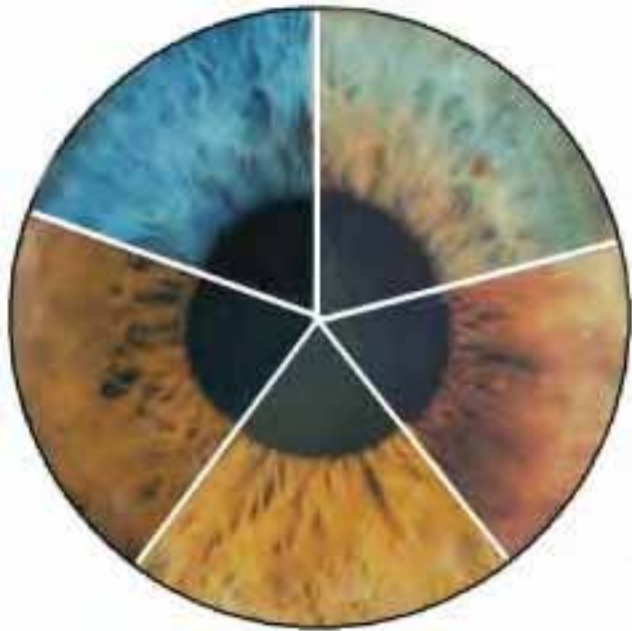
Bladder

Ovary

Kidney

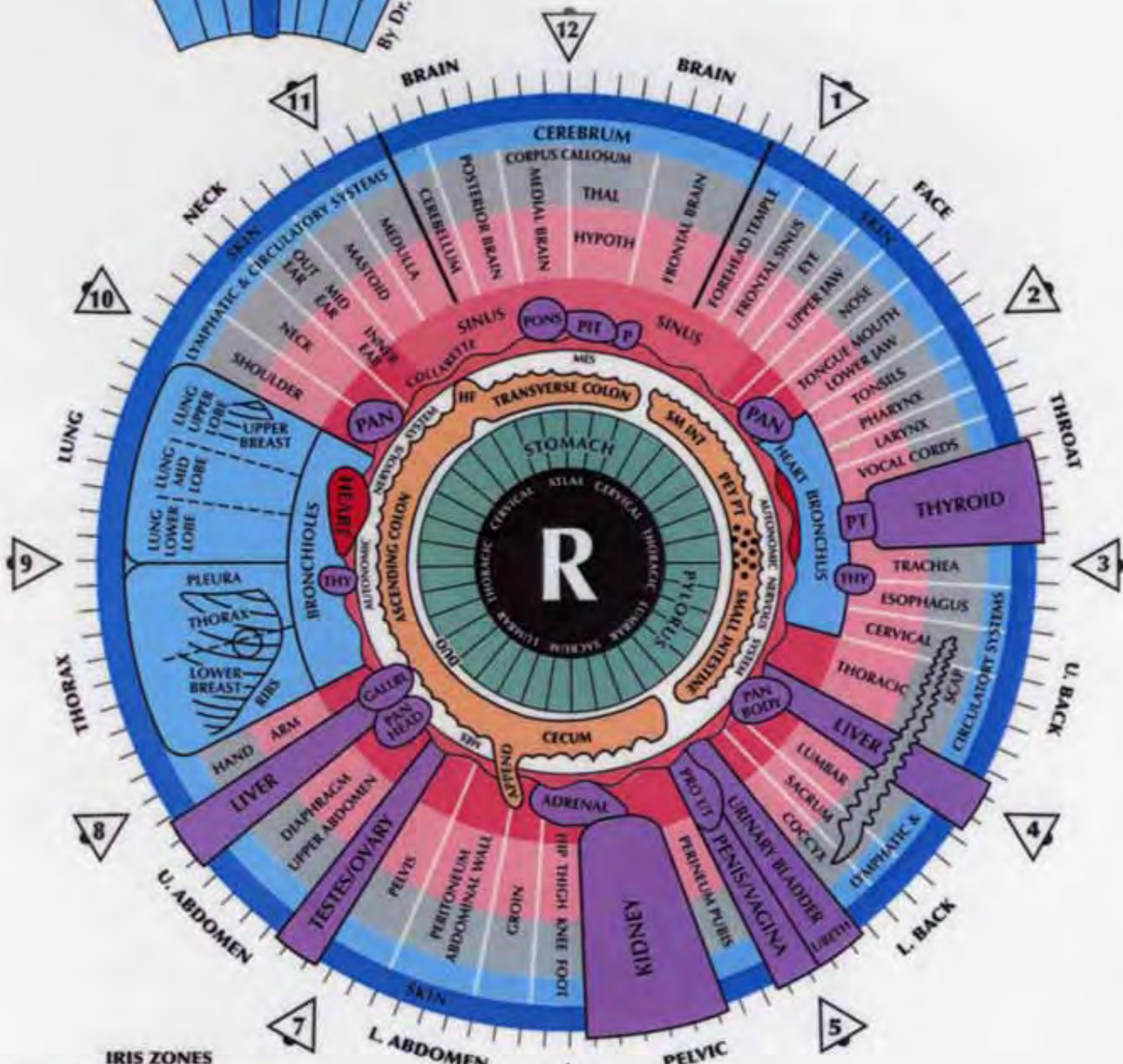






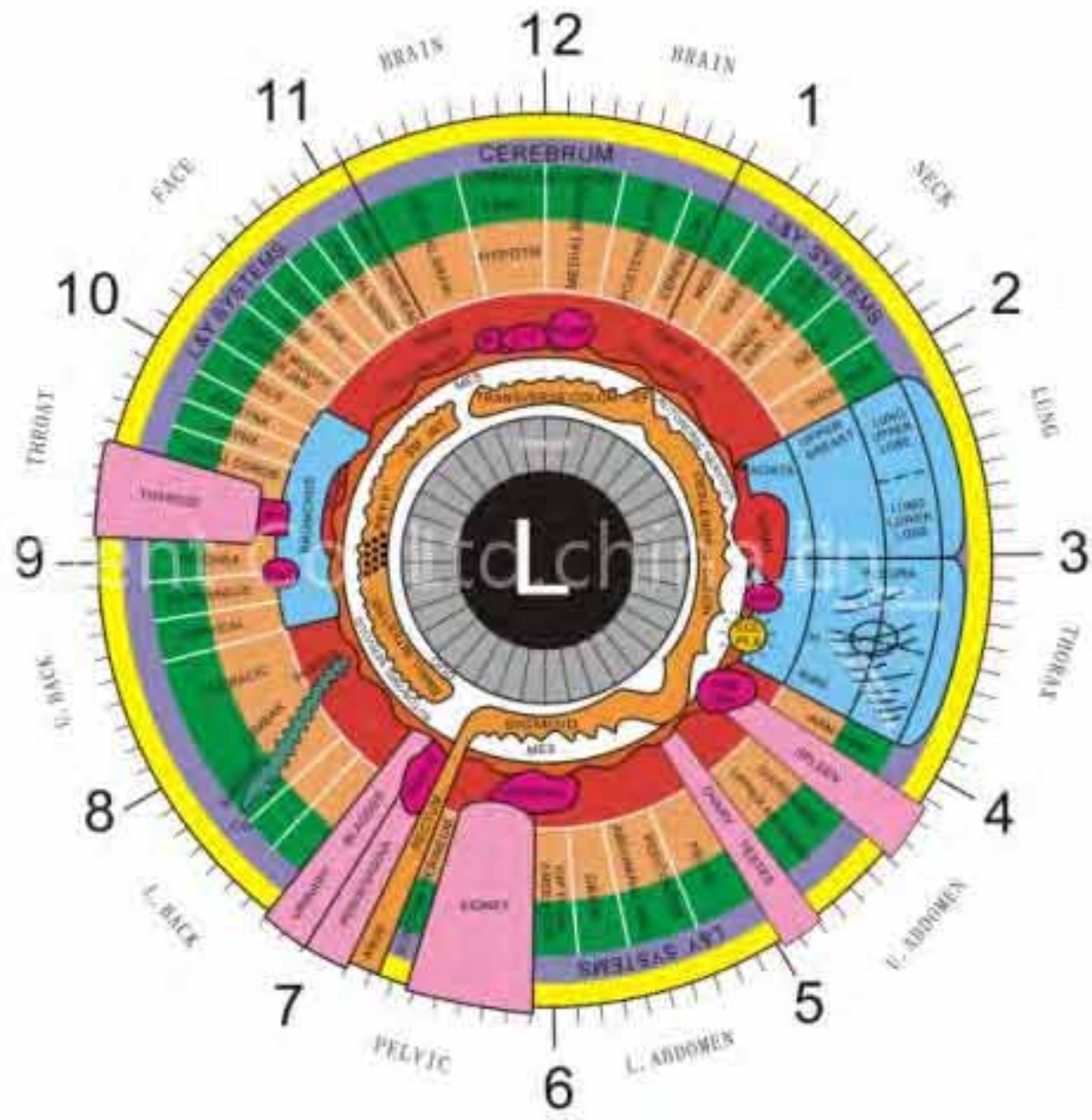
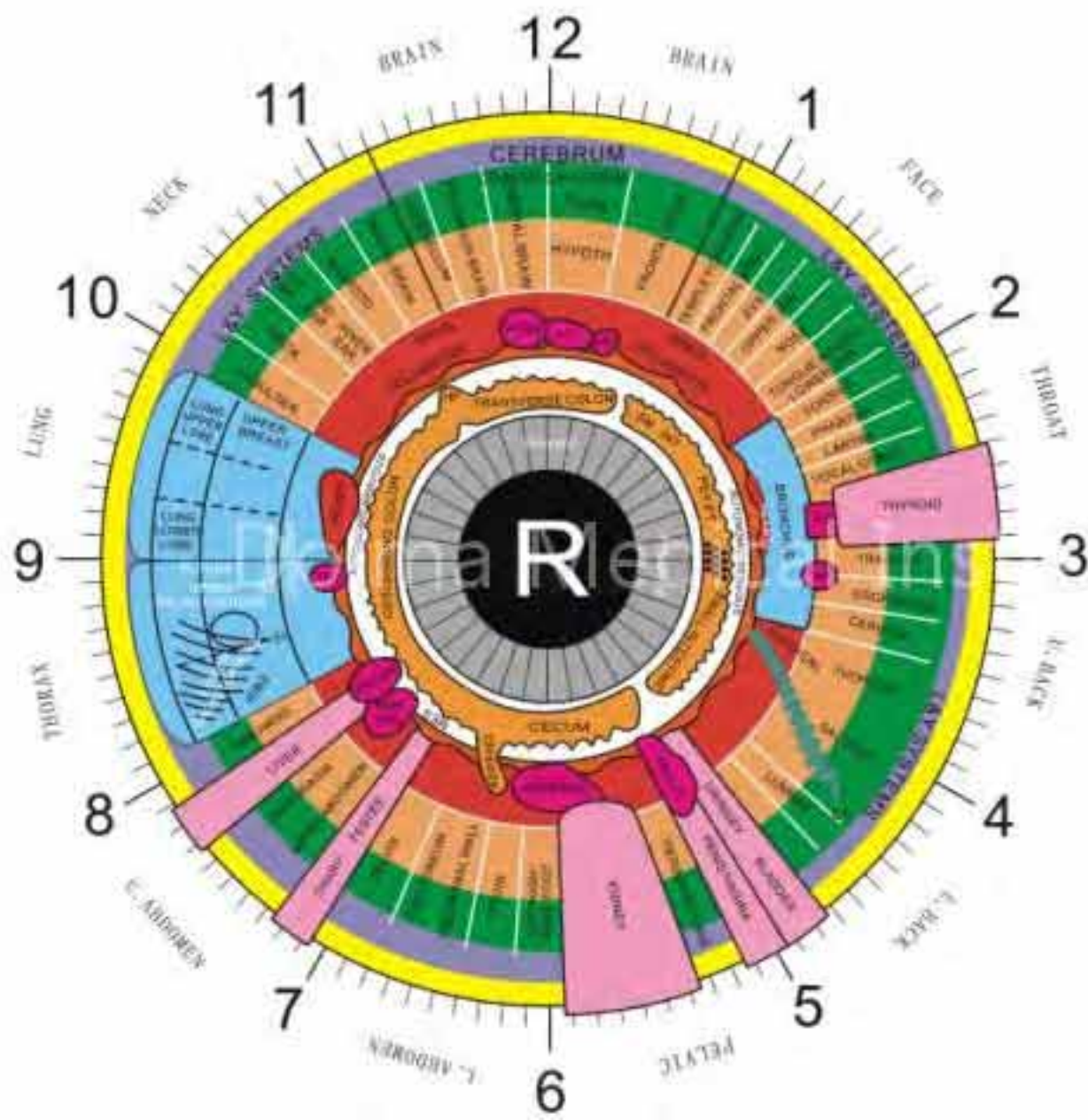
IRIDOLOGY CHART

BRAIN FLAIR

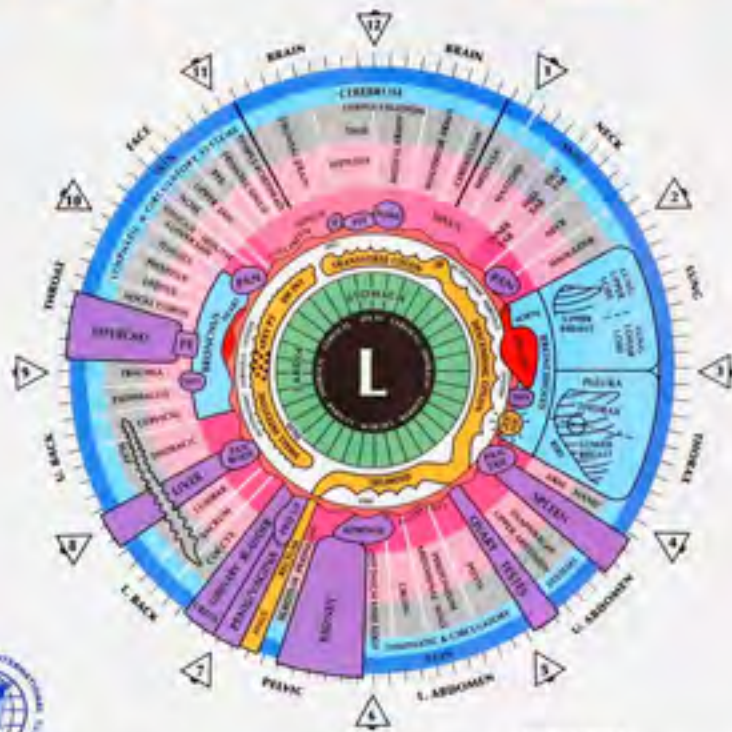
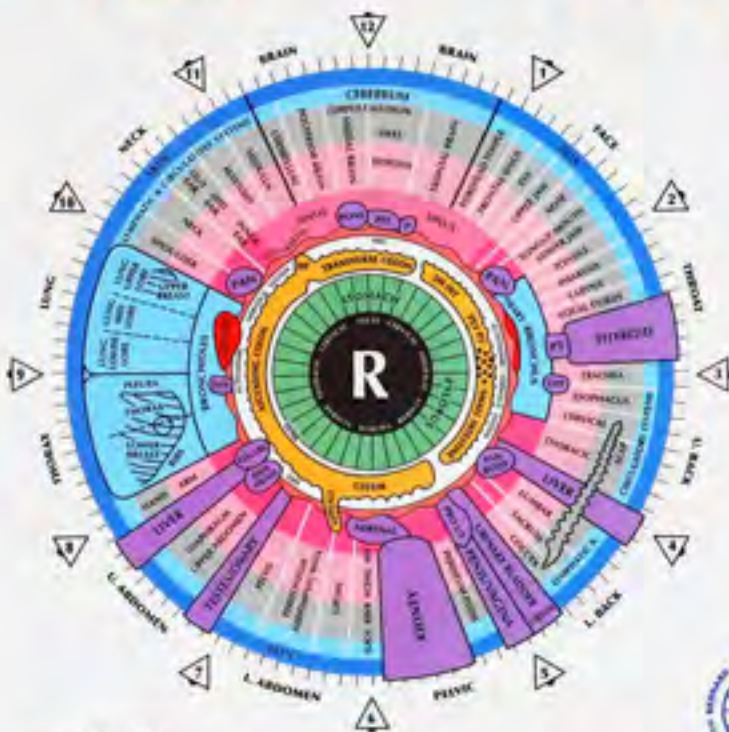


IRIS ZONES

- STOMACH - NUTRITIVE ZONE
 - INTESTINES - NUTRITIVE ZONE
 - BLOOD & LYMPH - HUMORAL ZONE
 - MUSCULATURE
 - BONY STRUCTURE
 - SUPERFICIAL LYMPH & BLOOD
 - SKIN & ORIFICES
- CILIARY ZONE



IRIDODOLOGY CHART



- IRIS ZONES**
- STOMACH - NUTRITIVE ZONE
 - INTESTINES - NUTRITIVE ZONE
 - BLOOD & Lymph - HUMERAL ZONE
 - MUSCULATURE
 - BONY STRUCTURE
 - SUPERFICIAL Lymph & BLOOD
 - SKIN & ORGANS
- CLAYTON ZONE**

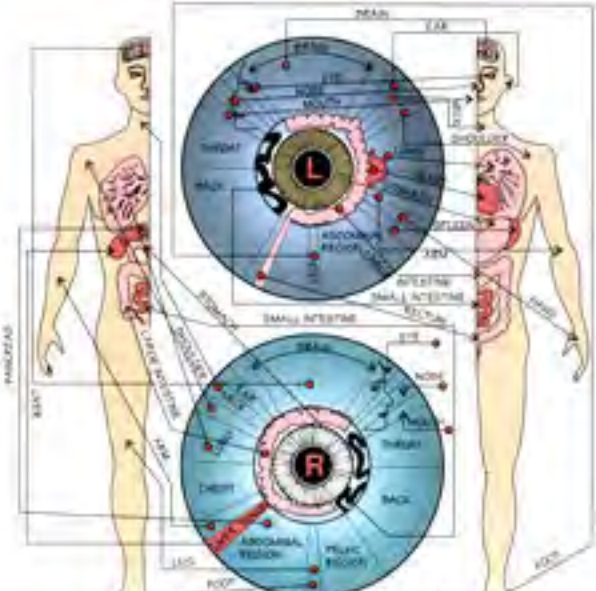


Developed by Bernard Jensen, D.C., Ph.D.
with revisions by Ellen Jensen, Ph.D., D.Sc.

© 2004
Phone # 760-291-1255
www.bernardjensen.org

ABBREVIATIONS

APPEND	Appendix	PXY PT	Pituitary Pituitary
DUOD	Duodenum	PR	Prostate
GALLBL	Gallbladder	PRD	Prostate
HP	Hepatic Plexus	SI	Splanchnic Plexus
HYPOTH	Hypothalamus	SCAP	Scapula
MES	Mesentery	SCX PLX	Solar Plexus
P	Pituitary	THAL	Thalamus
PT	Pituitary	THY	Thyroid
PAN	Pancreas	URETH	Urethra



THE LEFT ILLS REFERS TO THE LEFT SIDE OF THE BODY,
 THE RIGHT ILLS REFERS TO THE RIGHT SIDE OF THE BODY.

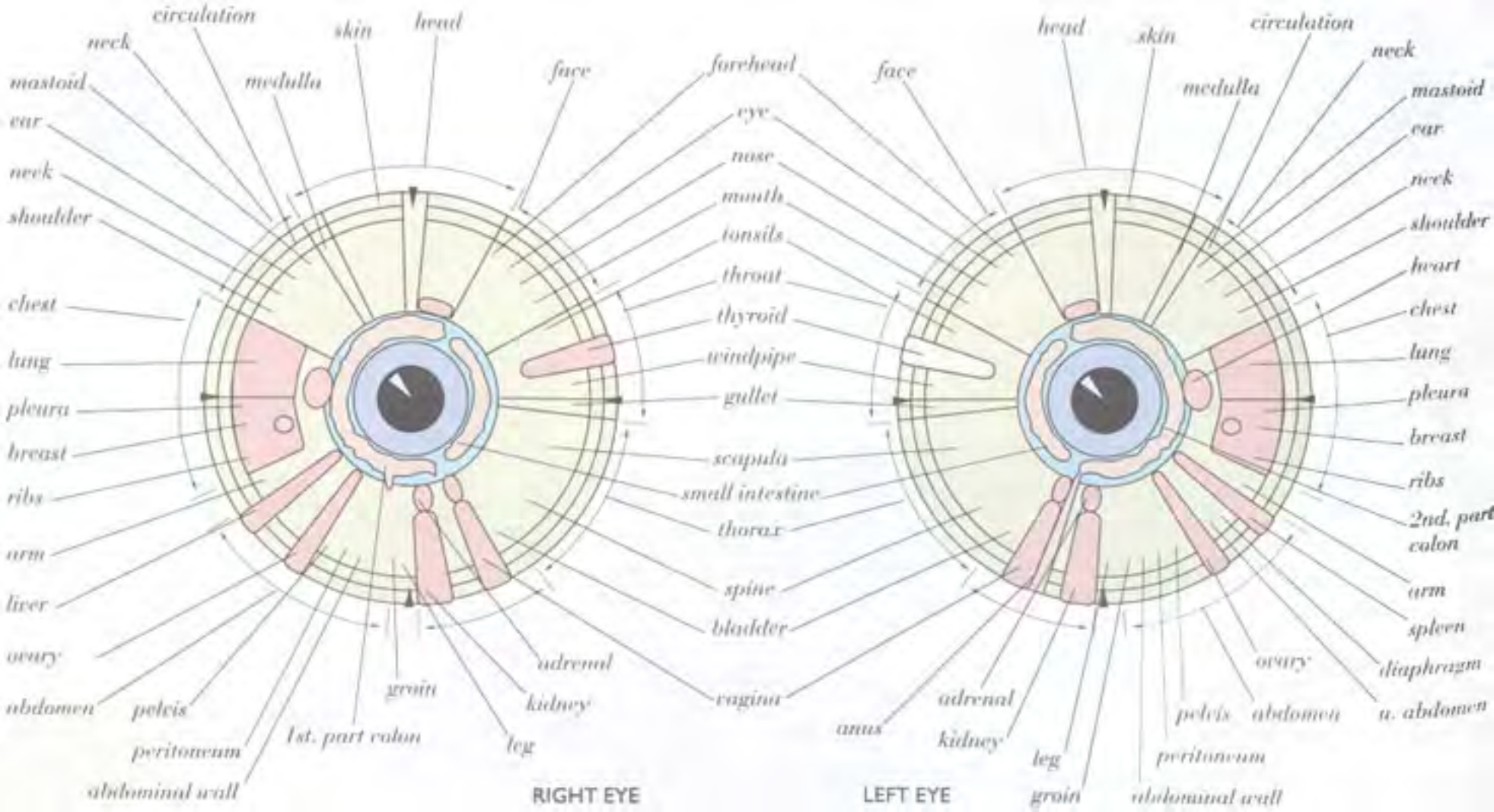
TOPOGRAPHIC OVERVIEW OF THE IRIS

BASED ON JOSEF DECK



© 2000 Pallas Institut • Heilstrasse 2 • D-71284 Hornstaad • All Rights reserved

Reproduction of this diagram is permitted for personal use only. All other rights reserved. For more information, please contact the Pallas Institute, Heilstrasse 2, D-71284 Hornstaad • Telephone: +49 7143 9000-0 • Fax: +49 7143 9000-10



Iridology, Chakras, Elements and Emotions

© Farida Sharan

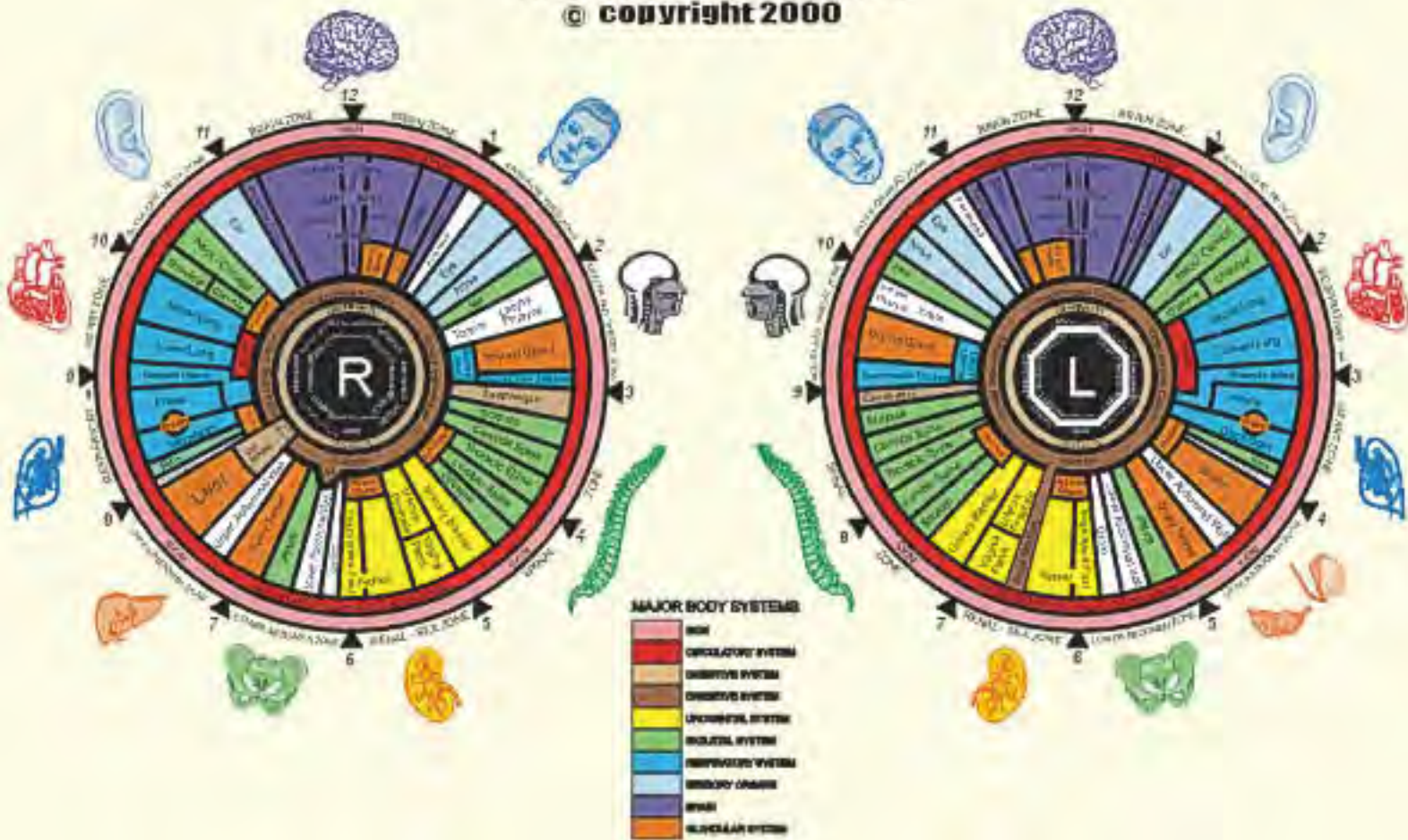
God Consciousness Sound Light



IRIDOLOGY CHART

ACCORDING TO
FRANK NAVRATIL BSc. N. D.

© copyright 2000





www.iriscope.org

86-0755-88856563

Adjacent sclera
neoplasm indicator



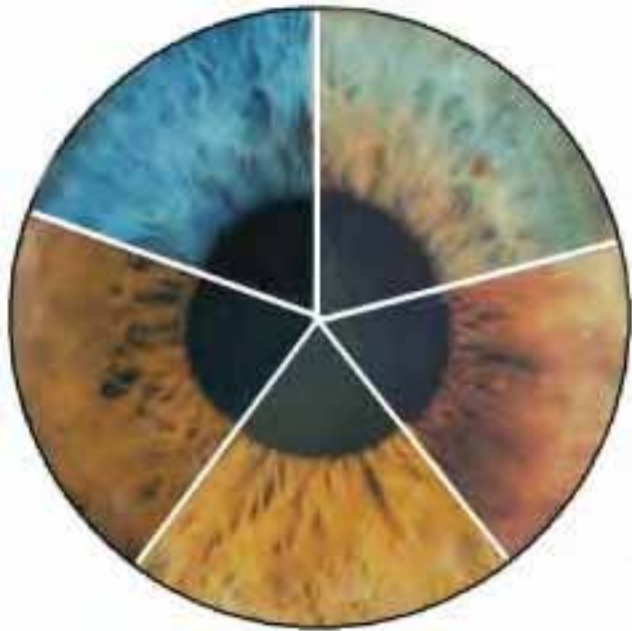
Lung



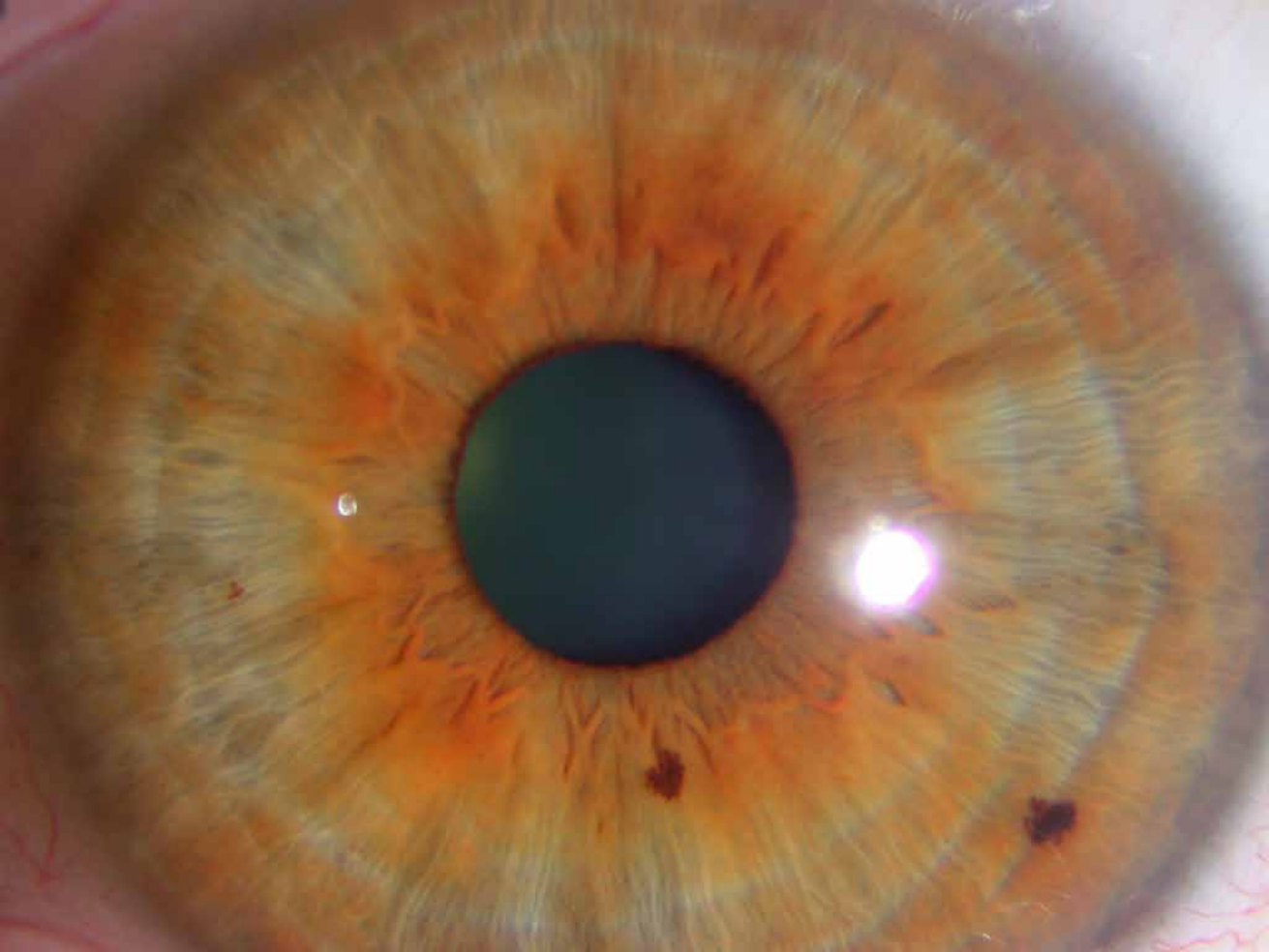
Black pigment
(neoplasm marker)

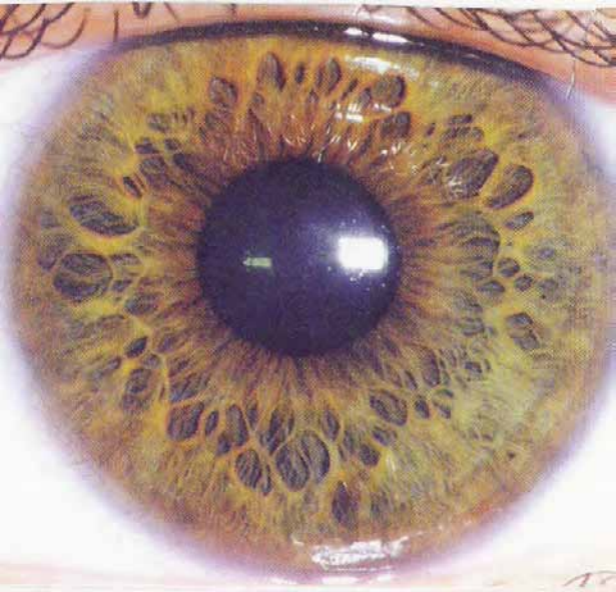


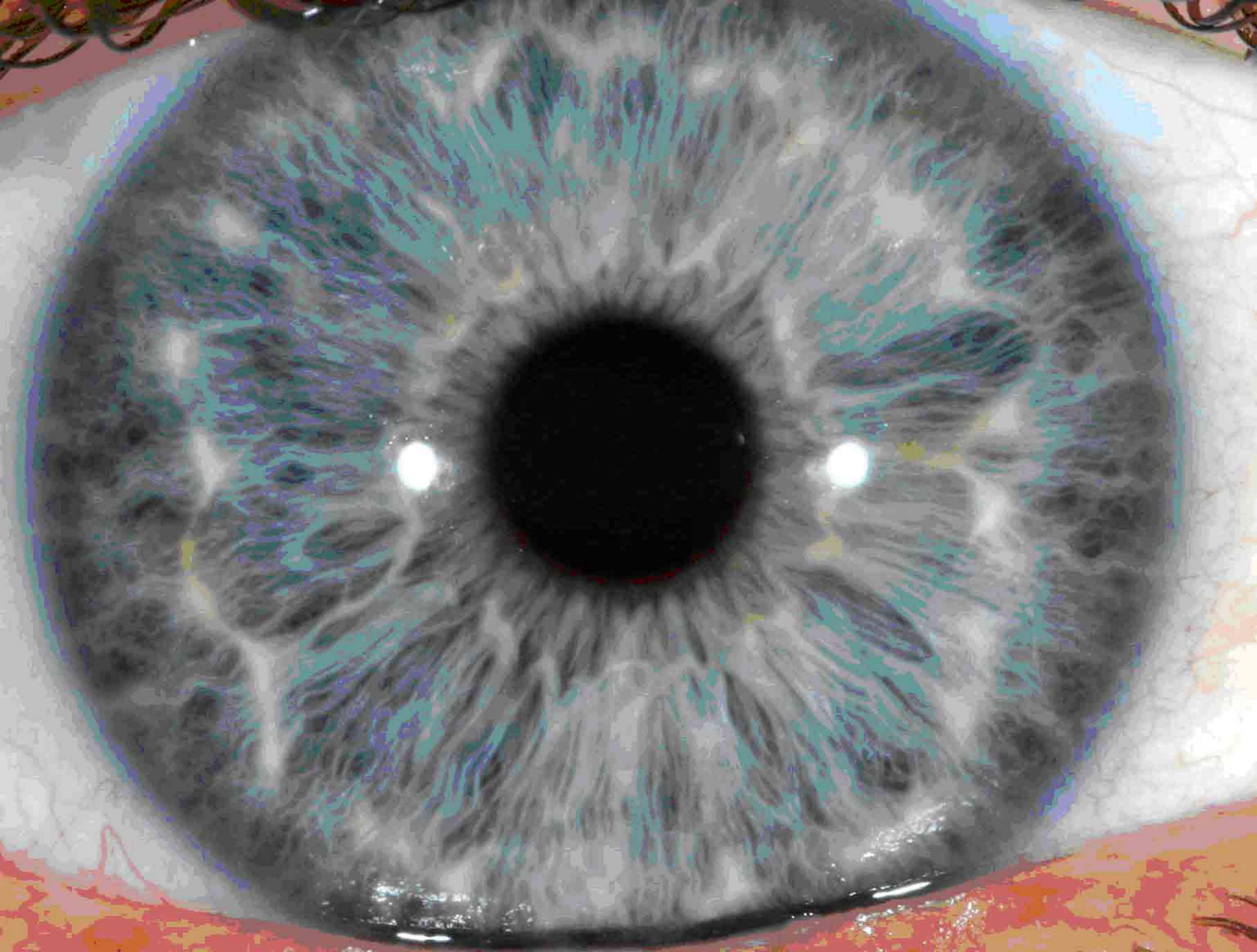
LOC VIRISCOPE

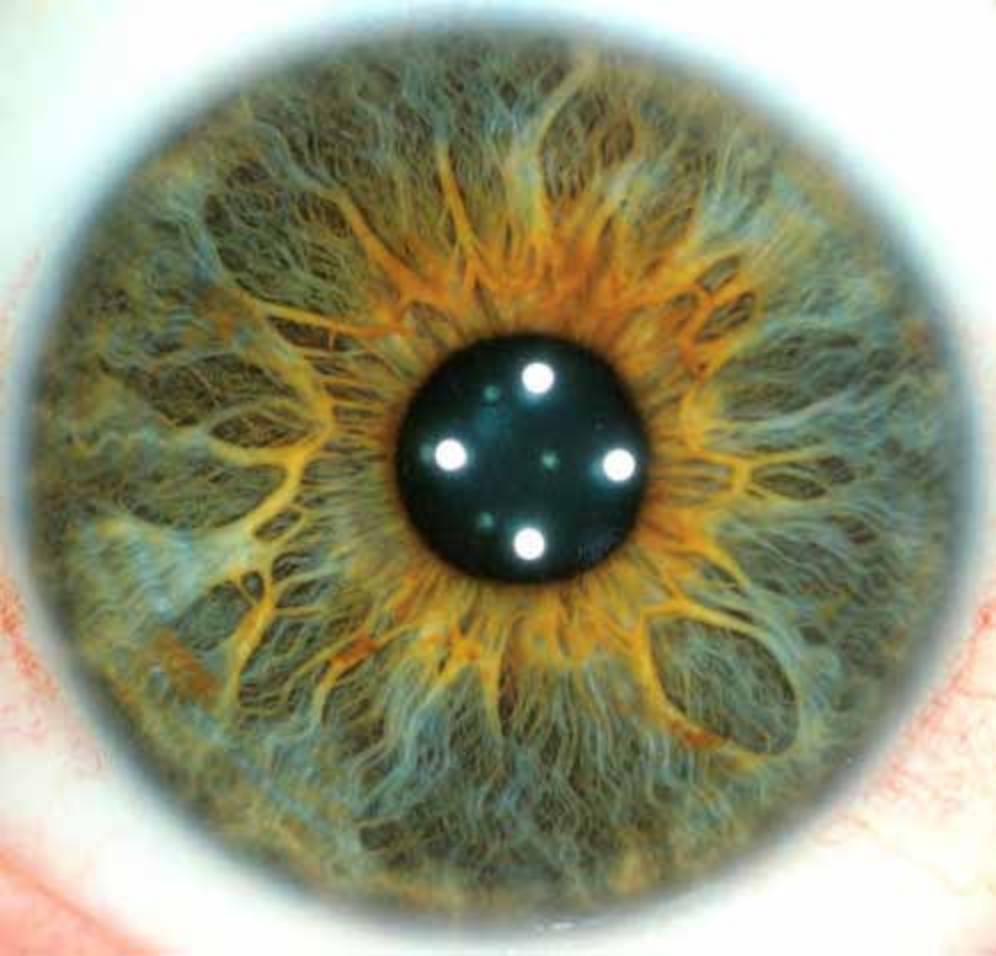












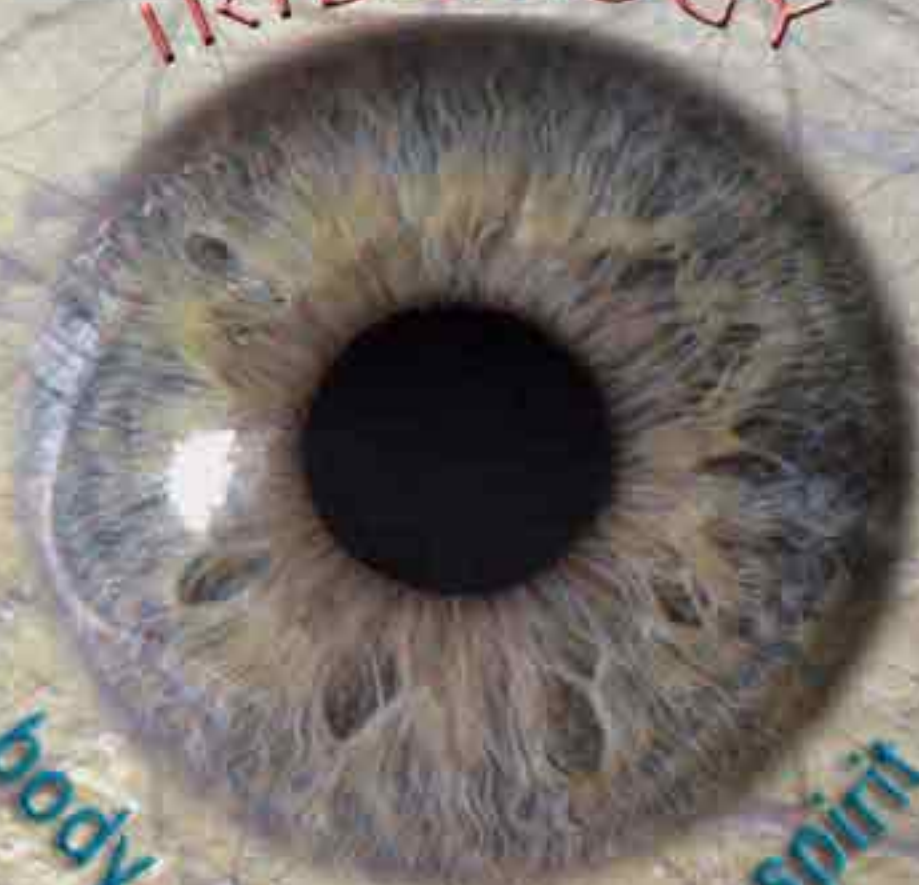


IRIDODOLOGY

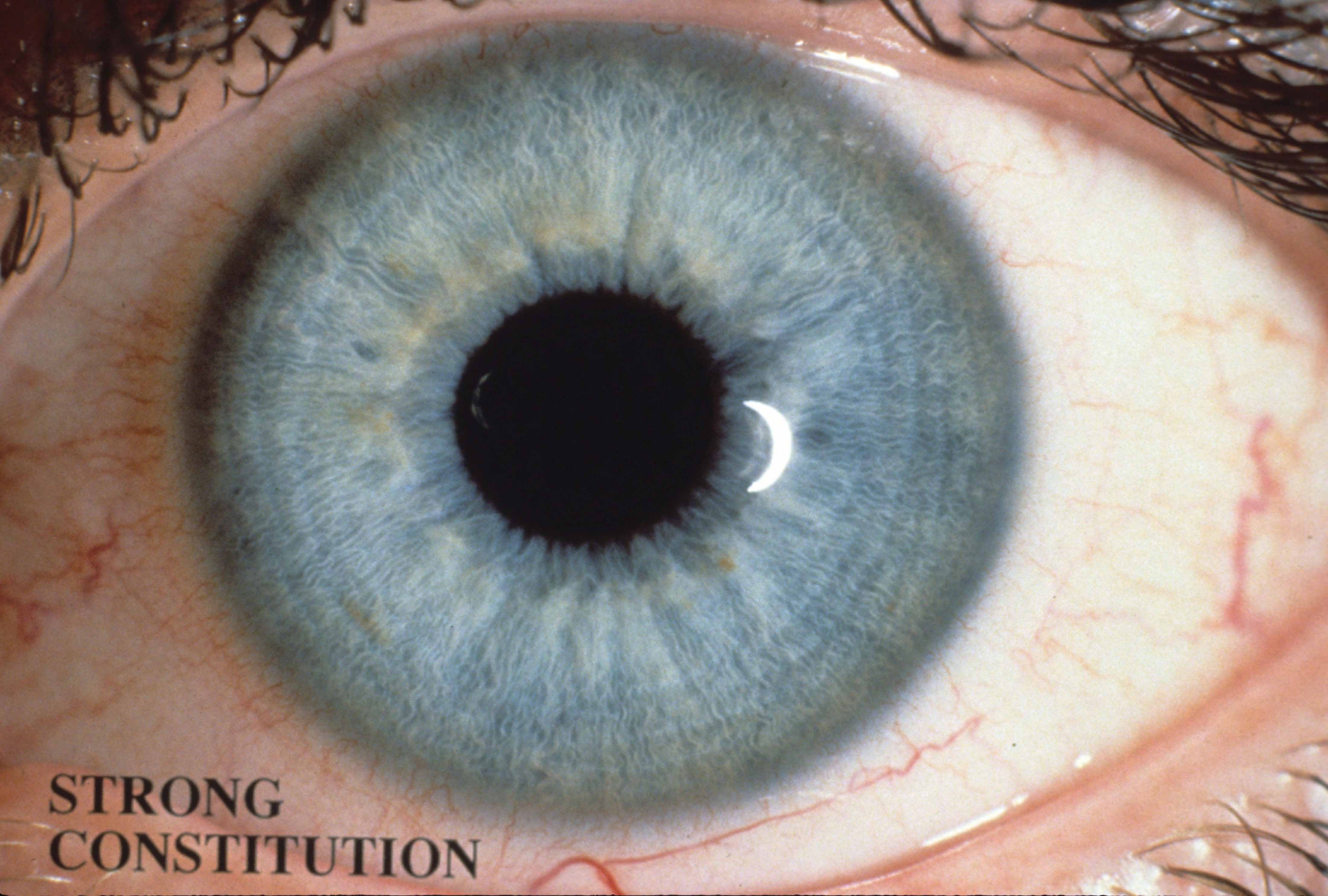
body

mind

spirit





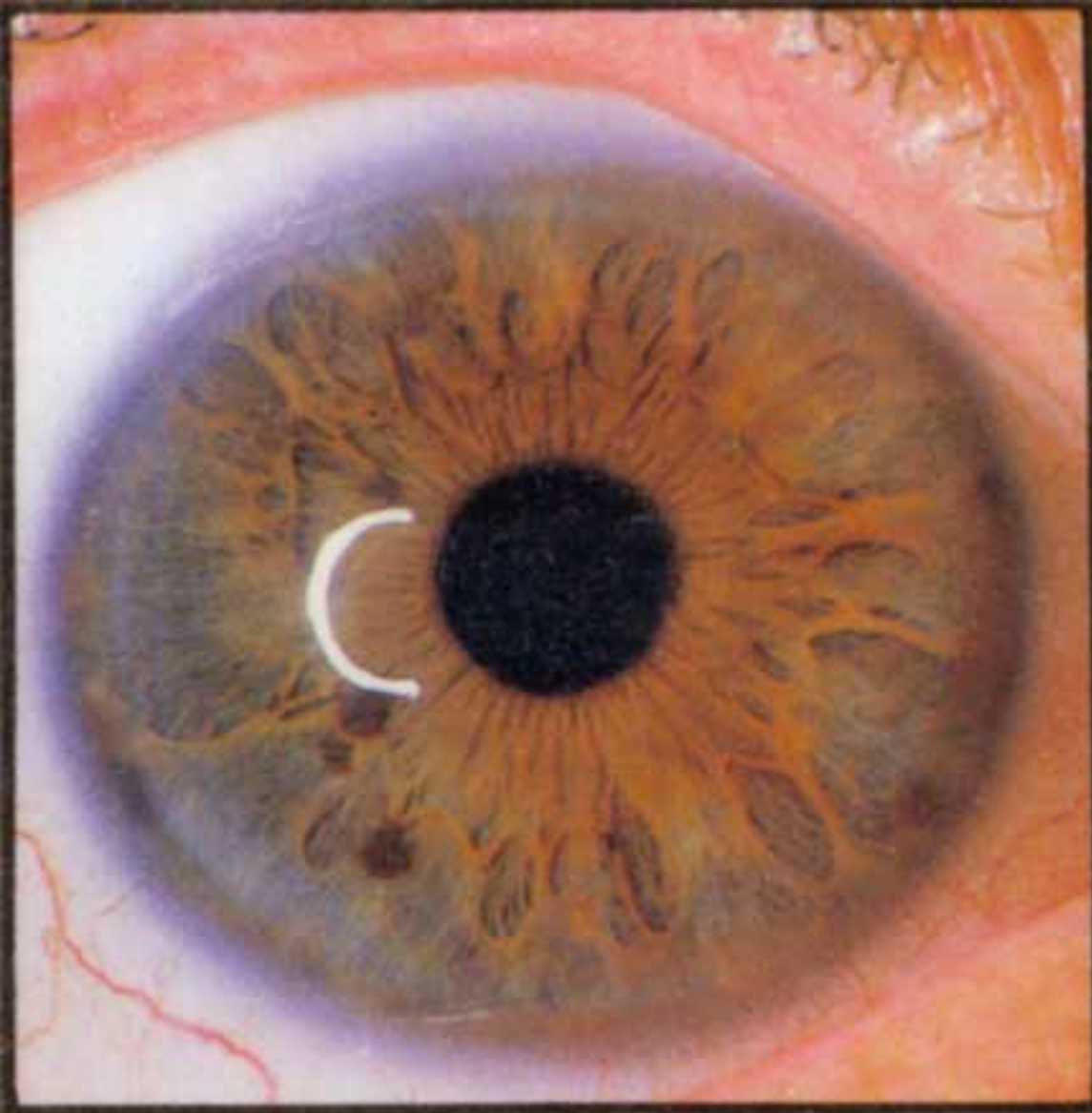


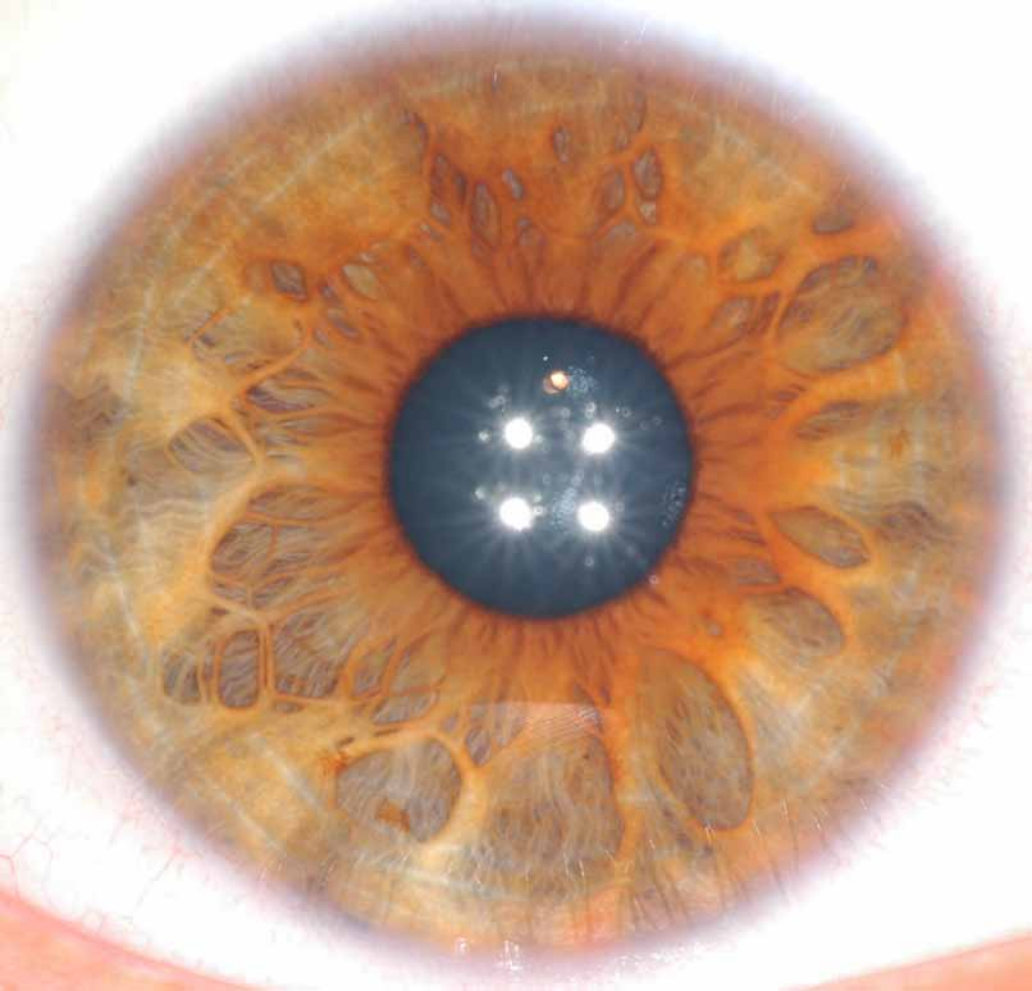
**STRONG
CONSTITUTION**



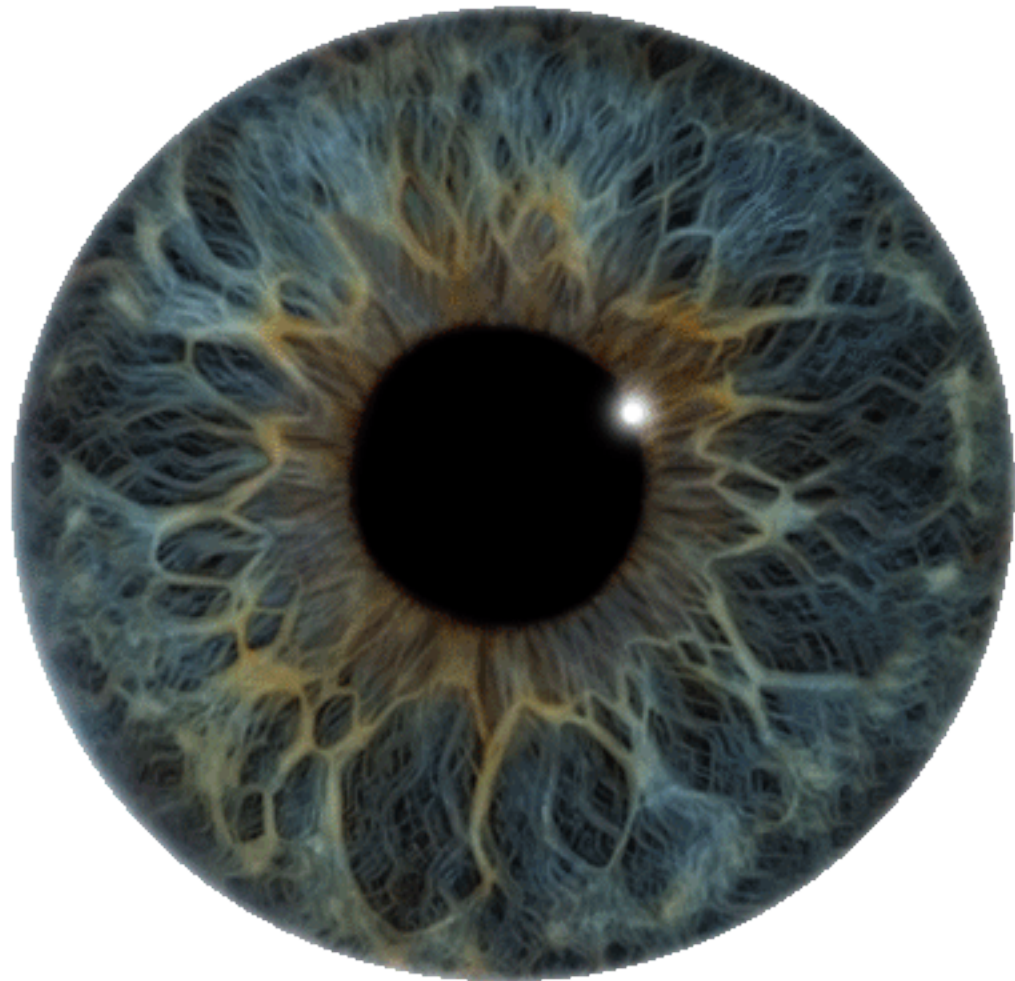
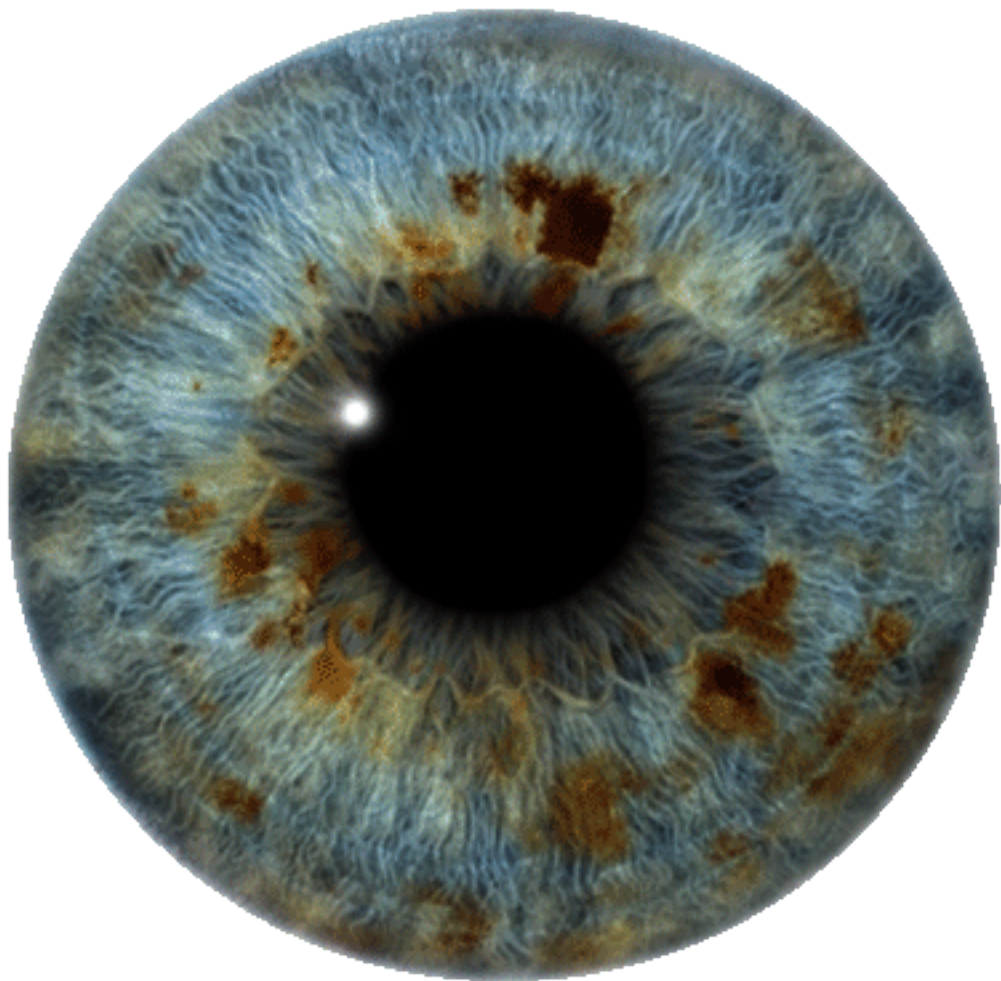














十二大症狀

TWELVE RIS SYMPTOMS



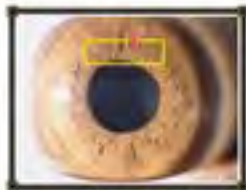
胃環

STOMACH RING



腸道與憩室

THE COLON & DIVERTICULEM



橫結膜下學

PROLAPSUS



膽環

SODIUM CHOLESTERY RING



神經緊張環

NERVE RINGS



自主神經環

AUTONOMIC NERVE WEATH



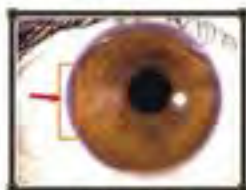
陽光放射環

RADIIS SOLARIS



色素沉澱斑

HYPER PIGMENTATION



靜脈充血環

VEINIS CONGESTION



皮膚代謝環

SCURF RIM



淋巴玫瑰環

LYMPHATIC ROSARY



老化環

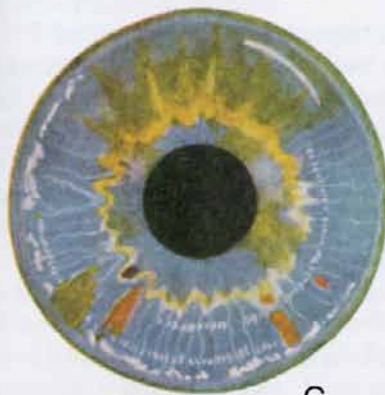
ARCUS SENILIS



A



B



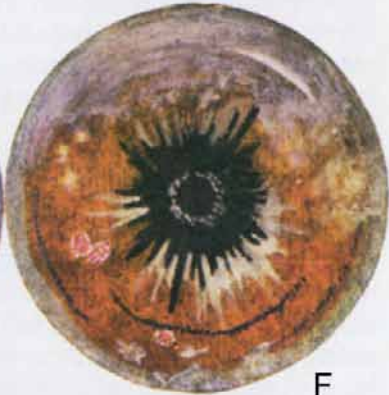
C



D



E



F



Acute Inflammation



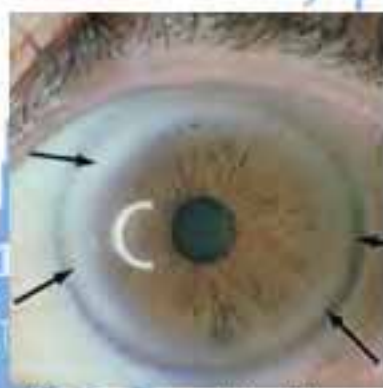
Bowel Spasticity



Bowel Stricture



Catarrhal Eye



Cholesterol Sodium Ring



Healing Lines



Lymphatic Rosary



Nerve Rings



Over Acidic Stomach Ring



Sinus Congestion



Strong Constitution



Under Acidic Stomach Ring



Open Lacuna



Closed Lacuna



Formy Capillaries



Red Capillaries



Lymphatic & pre-artery Capillaries



Homogeneous Capillaries



Wide Cube



Narrow Cube



Diagonal Cube



Downy Cube



Small Half Zone



Large Half Zone



Arter Scale



Chamber Ring



Lymphatic Scurry



Red Scurry



Yarn Ring



Darkness of the C Flaw Border



Downy Flouck



Lower Flap



Chamber Flap



Regardative Flap



Melan



Mydriasis



Pupil Flouck



Melanoid Vein



Purplish Vein



Pinkish Vein



Spiral Vein

FUNDAMENTAL IRIDOLOGY SIGNS

© 1994 by the International Association of Iridologists



INTERNATIONAL ASSOCIATION OF IRI DOLOGISTS
10000th Street, Suite 100, San Diego, CA 92121



腸環惡性黑斑



結腸憩室-瘻肉



結腸腸道狹窄



橫結腸下墜



結腸肌痙攣



結腸氣因性膨脹