

Uterus

From Wikipedia, the free encyclopedia

The **uterus** (from Latin "uterus", plural *uteri*) or **womb** is a major female hormone-responsive reproductive sex organ of humans and most other mammals. In the human, the lower end of the uterus, the cervix, opens into the vagina, while the other end the fundus is connected to the fallopian tubes. It is within the uterus that the fetus develops during gestation. In the embryo the uterus develops from the paramesonephric ducts which fuse into the single organ known as a simplex uterus. The uterus has different forms in many other animals and in some it exists as two separate uteri known as a duplex uterus.

In English, the term *uterus* is used consistently within the medical and related professions, while the Germanic-derived term *womb* is more common in everyday usage.

Contents

- 1 Structure
 - 1.1 Regions
 - 1.2 Layers
 - 1.3 Support
 - 1.3.1 Major ligaments
 - 1.4 Axes
 - 1.5 Position
 - 1.6 Blood supply
 - 1.7 Nerve supply
 - 1.8 Histology
 - 1.9 Development
- 2 Function

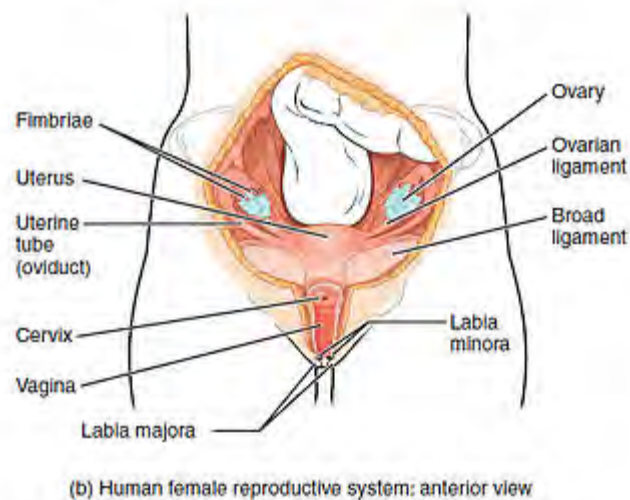
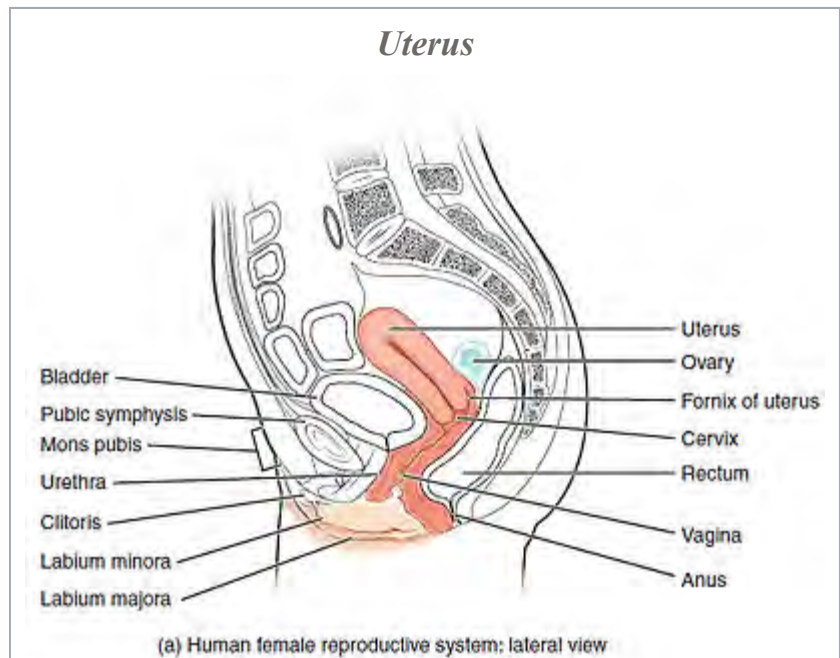


Image showing different structures around and relating to the human uterus.

Details

Precursor Paramesonephric duct

Artery Ovarian artery, uterine artery

Vein Uterine veins

Lymph Body and cervix to internal iliac lymph nodes, fundus to para-aortic lymph nodes, lumbar and superficial inguinal lymph nodes.

- 3 Clinical significance
- 4 Uterus transplantation
- 5 Other animals
- 6 Additional images
- 7 See also
- 8 References
- 9 External links

Structure

The uterus is located within the pelvic region immediately behind and almost overlying the bladder, and in front of the rectum. The human uterus is pear-shaped and about 7.6 cm (3 in.) long, 4.5 cm broad (side to side) and 3.0 cm thick.^[1] A

typical adult uterus weighs about 60 grams. The uterus can be divided anatomically into four regions: The fundus, corpus (body), cervix and the internal os. The cervix protrudes into the vagina. The uterus is held in position within the pelvis by condensations of endopelvic fascia, which are called ligaments. These ligaments include the pubocervical, transverse cervical ligaments or cardinal ligaments, and the uterosacral ligaments. It is covered by a sheet-like fold of peritoneum, the broad ligament.^[2]

Regions

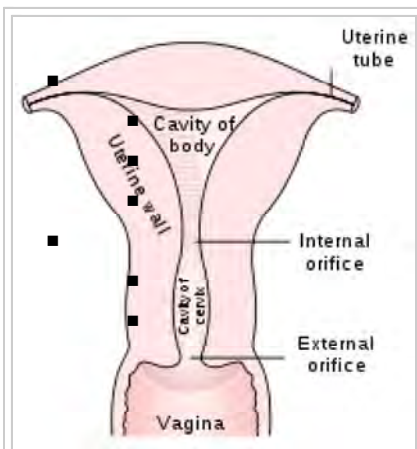


Diagram showing regions of the uterus

From outside to inside, the path to the uterus is as follows:

- Cervix uteri – "neck of uterus"
- External orifice of the uterus
- Cervical canal
- Internal orifice of the uterus
- corpus uteri – "Body of uterus"
- Uterine cavity
- Fundus (uterus)

Layers

The three layers, from innermost to outermost, are as follows:

Endometrium

is the inner epithelial layer, along with its mucous membrane, of the mammalian uterus. It has a basal layer and a functional layer; the functional layer thickens and then is sloughed during the menstrual cycle or estrous cycle. During pregnancy, the uterine glands and blood vessels in the endometrium further increase in size and number. Vascular spaces fuse and become interconnected, forming the placenta, which supplies oxygen and nutrition to the

Identifiers

Latin	<i>Uterus</i>
Greek	<i>Hysterā</i>
MeSH	<i>A05.360.319.679</i> (https://www.nlm.nih.gov/cgi/mesh/2011/MB_cgi?mode=&term=Uterus)
TA	A09.1.03.001 (http://www.unifr.ch/ifaa/Public/EntryPage/TA98%20Tree/Entity%20TA98%20EN/09.1.03.001%20Entity%20TA98%20EN.htm)
FMA	17558 (http://xiphoid.biostr.washington.edu/fma/fmabrowser-hierarchy.html?fmaid=17558)

Anatomical terminology

[edit on Wikidata]

embryo and fetus.^{[3][4]} As of 2015 only preliminary studies had been made of human microbiota colonizing the endometrium; they were too small too allow generalizations to be drawn.^[5]

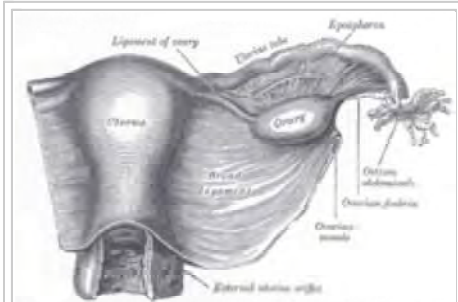
Myometrium

The uterus mostly consists of smooth muscle, known as "myometrium." The innermost layer of myometrium is known as the **junctional zone**, which becomes thickened in adenomyosis.

Perimetrium

Serous layer of visceral peritonium. It covers the outer surface of the uterus.^[6]

Support



Uterus covered by the broad ligament

The uterus is primarily supported by the pelvic diaphragm, perineal body and the urogenital diaphragm. Secondly, it is supported by ligaments and the peritoneal ligament the broad ligament of uterus.^[7]

Major ligaments

It is held in place by several peritoneal ligaments, of which the following are the most important (there are two of each):

Name	From	To
Uterosacral ligament	Posterior cervix	Anterior face of sacrum
Cardinal ligaments	Side of the cervix	Ischial spines
Pubocervical ligament ^[7]	Side of the cervix	Pubic symphysis

Axes

Normally the uterus lies in anteversion & anteflexion. In most women, the long axis of the uterus is bent forward on the long axis of the vagina, against the urinary bladder. This position is referred to as anteversion of the uterus. Furthermore, the long axis of the body of the uterus is bent forward at the level of the internal os with the long axis of the cervix. This position is termed anteflexion of the uterus.^[8] Uterus assumes anteverted position in 50% women, retroverted position in 25% women and rest have midposed uterus.^[1]

Position

The uterus is in the middle of the pelvic cavity in frontal plane (due to ligamentum latum uteri). The fundus does not surpass the linea terminalis, while the vaginal part of the cervix does not extend below interspinal line. The uterus is mobile and moves posteriorly under the pressure of a full bladder, or anteriorly under the pressure of a full rectum. If both are full, it moves upwards. Increased intraabdominal pressure pushes it downwards. The mobility is conferred to it by musculo-fibrous

apparatus that consists of suspensory and sustentacular part. Under normal circumstances the suspensory part keeps the uterus in ante flexion and anteversion (in 90% of women) and keeps it "floating" in the pelvis. The meaning of these terms are described below:

Distinction	More common	Less common
Position tipped	"Anteverted": Tipped forward	"Retroverted": Tipped backwards
Position of fundus	"Anteflexed": Fundus is pointing forward relative to the cervix	"Retroflexed": Fundus is pointing backwards

Sustentacular part supports the pelvic organs and comprises the larger pelvic diaphragm in the back and the smaller urogenital diaphragm in the front.

The pathological changes of the position of the uterus are:

- retroversion/retroflexion, if it is fixed
- hyperanteflexion – tipped too forward; most commonly congenital, but may be caused by tumors
- anteversion, retroversion, lateroposition – the whole uterus is moved; caused by parametritis or tumors
- elevation, descensus, prolapse
- rotation (the whole uterus rotates around its longitudinal axis), torsion (only the body of the uterus rotates around)
- inversion

In cases where the uterus is "tipped", also known as retroverted uterus, women may have symptoms of pain during sexual intercourse, pelvic pain during menstruation, minor incontinence, urinary tract infections, fertility difficulties,^[9] and difficulty using tampons. A pelvic examination by a doctor can determine if a uterus is tipped.^[10]

Blood supply



Vessels of the uterus and its appendages, rear view.

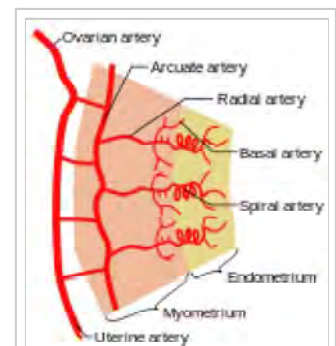
The uterus is supplied by arterial blood both from the uterine artery and the ovarian artery. Another anastomotic branch may also supply the uterus from anastomosis of these two arteries.

Nerve supply

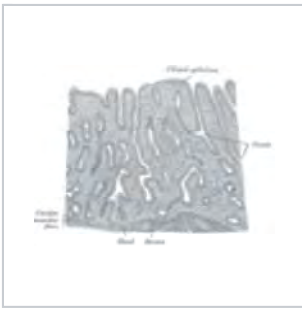
Afferent nerves supplying uterus are T11 and T12. Sympathetic supply is

from hypogastric plexus and ovarian plexus. Parasympathetic supply is from second, third and fourth sacral nerves.

Histology



Schematic diagram of uterine arterial vasculature seen as a cross-section through the myometrium and endometrium.



Vertical section of mucous membrane of human **uterus**.

Development

Bilateral Müllerian ducts form during early fetal life. In males, MIF secreted from the testes leads to their regression. In females, these ducts give rise to the Fallopian tubes and the uterus. In humans the lower segments of the two ducts fuse to form a single uterus, however, in cases of uterine malformations this development may be disturbed. The different uterine forms in various mammals are due to various degrees of fusion of the two Müllerian ducts.

Function

The uterus is essential in sexual response by directing blood flow to the pelvis and ovaries, and to the external genitals, including the vagina, labia, and clitoris.

The reproductive function of the uterus is to accept a fertilized ovum which passes through the utero-tubal junction from the fallopian tube (uterine tube). The ovum divides to become a blastocyst, which implants into the endometrium, and derives nourishment from blood vessels which develop exclusively for this purpose. The fertilized ovum becomes an embryo, attaches to a wall of the uterus, creates a placenta, and develops into a fetus (gestates) until childbirth. Due to anatomical barriers such as the pelvis, the uterus is pushed partially into the abdomen due to its expansion during pregnancy. Even during pregnancy the mass of a human uterus amounts to only about a kilogram (2.2 pounds).

Clinical significance

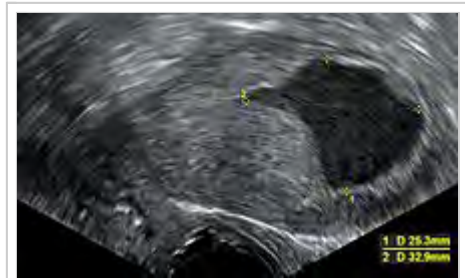
A hysterectomy is the surgical removal of the uterus which may be carried out for a number of reasons including the ridding of tumours both benign and malignant. A complete hysterectomy involves the removal of the body, fundus, and cervix of the uterus. A partial hysterectomy may just involve the removal of the uterine body while leaving the cervix intact. It is the most commonly performed gynecological surgical procedure.

Some pathological states include:

- Prolapse of the uterus

- Carcinoma of the cervix – malignant neoplasm
- Carcinoma of the uterus – malignant neoplasm
- Fibroids – benign neoplasms
- Adenomyosis – ectopic growth of endometrial tissue within the myometrium
- Endometritis, infection at the uterine cavity.
- Pyometra – infection of the uterus, most commonly seen in dogs
- Uterine malformations mainly congenital malformations including Uterine Didelphys, bicornuate uterus and septate uterus. It also includes congenital absence of the uterus Rokitansky syndrome
- Asherman's syndrome, also known as intrauterine adhesions occurs when the basal layer of the endometrium is damaged by instrumentation (e.g. D&C) or infection (e.g. endometrial tuberculosis) resulting in endometrial scarring followed by adhesion formation which partially or completely obliterates the uterine cavity.
- Hematometra, which is accumulation of blood within the uterus.

- Accumulation of fluids other than blood or of unknown constitution. One study came to the conclusion that postmenopausal women with endometrial fluid collection on gynecologic ultrasonography should undergo endometrial biopsy if the endometrial lining is thicker than 3 mm or the endometrial fluid is echogenic. In cases of a lining 3 mm or less and clear endometrial fluid, endometrial biopsy was not regarded to be necessary, but endocervical curettage to rule out endocervical cancer was recommended.^[11]
- Myometritis – inflammation of the muscular uterine wall.^[12]



Transvaginal ultrasonography showing a uterine fluid accumulation in a postmenopausal woman.

Uterus transplantation

In 2012, the world's first womb transplant from a dead donor was performed on a Turkish woman who was born without a womb, but has her own ovaries. She is in good condition and the womb is functional. In the year 2000 in Saudi Arabia a similar transplant was performed, but from a live donor. Although womb transplants have been successful in animals such as mice, rats and sheep, the prevailing opinion in the field is that the risks are too great. Apart from risks of rejection of the new womb, there is concern that the drugs necessary for prevention of rejection of the donated womb might harm the fetus.^[13]

Other animals

Most animals that lay eggs, such as birds and reptiles, including most ovoviviparous species, have an oviduct instead of a uterus. However, recent research into the biology of the viviparous (not merely ovoviviparous) skink *Trachylepis ivensi* has revealed development of a very close analogue to eutherian mammalian placental development.^[14]

In monotremes, mammals which lay eggs, namely the platypus and the echidnas, either the term *uterus* or *oviduct* is used to describe the same organ, but the egg does not develop a placenta within the mother and thus does not receive further nourishment after formation and fertilization.

Marsupials have two uteri, each of which connect to a lateral vagina and which both use a third, middle "vagina" which functions as the birth canal. Marsupial embryos form a *choriovitelline* "placenta" (which can be thought of as something between a monotreme egg and a "true" placenta), in which the egg's yolk sac supplies a large part of the embryo's nutrition but also attaches to the uterine wall and takes nutrients from the mother's bloodstream.

The fetus usually develops fully in placental mammals and only partially in marsupials including kangaroos and opossums. In marsupials the uterus forms as a duplex organ of two uteri. In monotremes (egg-laying mammals) such as the platypus, the uterus is duplex and rather than nurturing the embryo, secretes the shell around the egg. It is essentially identical with the shell gland of birds and reptiles, with which the uterus is homologous.^[15]

In mammals, the four main forms of the uterus are: duplex, bipartite, bicornuate and simplex.

Duplex

There are two wholly separate uteri, with one fallopian tube each. Found in marsupials (such as kangaroos, Tasmanian devils, opossums, etc.), rodents (such as mice, rats, and guinea pigs), and lagomorpha (rabbits and hares).

Bipartite

The two uteri are separate for most of their length, but share a single cervix. Found in ruminants (deer, moose, elk etc.), hyraxes, cats, and horses.

Bicornuate

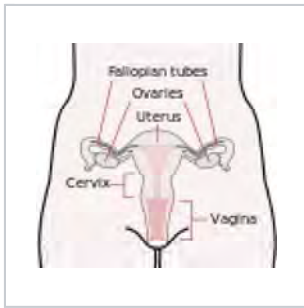
The upper parts of the uterus remain separate, but the lower parts are fused into a single structure. Found in dogs, pigs, elephants, whales, dolphins, and tarsiers, and strepsirrhine primates among others.

Simplex

The entire uterus is fused into a single organ. Found in higher primates (including humans and chimpanzees) . Occasionally, some individual females (including humans) may have a bicornuate uterus, a uterine malformation where the two parts of the uterus fail to fuse completely during fetal development.

Two uteri usually form initially in a female and usually male fetus, and in placental mammals they may partially or completely fuse into a single uterus depending on the species. In many species with two uteri, only one is functional. Humans and other higher primates such as chimpanzees, usually have a single completely fused uterus, although in some individuals the uteri may not have completely fused.

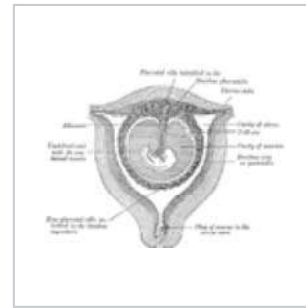
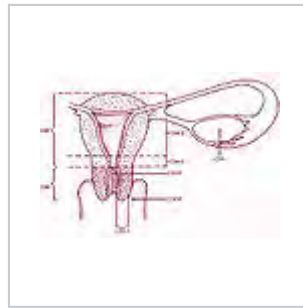
Additional images



Schematic frontal view of female anatomy



Uterus and uterine tubes.



Sectional plan of the gravid uterus in the third and fourth month.



Fetus in utero, between fifth and sixth months.



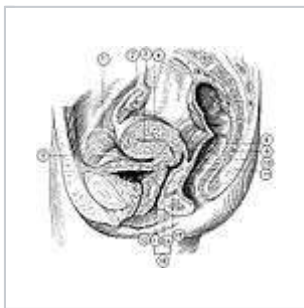
Female pelvis and its contents, seen from above and in front.



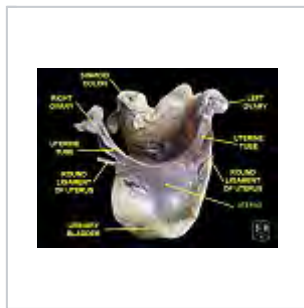
The arteries of the internal organs of generation of the female, seen from behind.



Median sagittal section of female pelvis.



(Description located on image page)



Uterus

See also


- Menopause
- Artificial uterus
- Social uterus

References

- Manual of Obstetrics. (3rd ed.). Elsevier 2011. pp. 1–16. ISBN 9788131225561.
- Gray's Anatomy for Students, 2nd edition
- Blue Histology - Female Reproductive System (<http://www.lab.anhb.uwa.edu.au/mb140/CorePages/FemaleRepro/FemaleRepro.htm>). School of Anatomy and Human Biology — The University of Western Australia Accessed 20061228 20:35
- Guyton AC and Hall JE, eds. (2006). "Chapter 81 Female Physiology Before Pregnancy and Female Hormones". *Textbook of Medical Physiology* (11th ed.). Elsevier Saunders. pp. 1018ff. ISBN 9780721602400.
- Franasiak, Jason M.; Scott, Richard T. (2015). "Reproductive tract microbiome in assisted reproductive technologies". *Fertility and Sterility*. **104** (6): 1364–1371. doi:10.1016/j.fertnstert.2015.10.012. ISSN 0015-0282. PMID 26597628.
- Ross, Michael H.; Pawlina, Wojciech. *Histology, a text and atlas* (Sixth ed.). p. 848.
- The Pelvis (<http://www.ucc.ie/medsoc/1styr/resources/anatomy/The%20Pelvis.doc>) University College Cork Archived from the original (<http://classic-web.archive.org/web/20080227041631/http://www.ucc.ie/medsoc/1styr/resources/anatomy/The+Pelvis.doc>) on 2008-02-27
- Snell, Clinical Anatomy by regions, 8th edition
- <http://www.womens-health.co.uk/retrover.asp>
- Tipped Uterus:Tilted Uterus (<http://www.americanpregnancy.org/womenshealth/tippeduterus.html>) AmericanPregnancy.org. Accessed 25 March 2011
- Takacs P, De Santis T, Nicholas MC, Verma U, Strassberg R, Duthely L (November 2005). "Echogenic endometrial fluid collection in postmenopausal women is a significant risk factor for disease". *J Ultrasound Med*. **24** (11): 1477–81. PMID 16239648.
- "Myometritis - Medical Definition from MediLexicon". *www.medilexicon.com*.
- "The world's first womb transplant: Landmark surgery brings hope to millions of childless women – and it could be in Britain soon". May 25, 2012.
- Blackburn, D. G.; Flemming, A. F. (2011). "Invasive implantation and intimate placental associations in a placentotrophic African lizard, *Trachylepis ivensi* (scincidae)". *Journal of Morphology*. **273**: 137–59. doi:10.1002/jmor.11011. PMID 21956253.
- Romer, Alfred Sherwood; Parsons, Thomas S. (1977). *The Vertebrate Body*. Philadelphia, Pennsylvania: Holt-Saunders International. pp. 390–392. ISBN 0-03-910284-X.

External links

- Gray's s268

	Look up womb or uterus in Wiktionary, the free dictionary.
---	--

(<https://web.archive.org/web/2004/http://education.yahoo.com/reference/gray/subjects/subject?id=268>)

- Anatomy photo:43:01-0102 (<http://ect.downstate.edu/courseware/haonline/labs/l43/010102.htm>) at the SUNY Downstate Medical Center – "The Female Pelvis: Organs in the Female and male Pelvis in situ"
- Encyclopedia.com (<http://www.encyclopedia.com/doc/1E1-uterus.html>)
- Uterus Anatomy (<http://medicalterms.info/anatomy/Uterus/>)
- Uterus Pregnancy (<http://cancerlive.net/uterine-pregnancy/>)

In the human

Retrieved from "<https://en.wikipedia.org/w/index.php?title=Uterus&oldid=757306479>"

Categories: [Organs \(anatomy\)](#) | [Pelvis](#) | [Mammal female reproductive system](#)
| [Human female reproductive system](#) | [Uterus](#) | [Women's health](#)

- This page was last modified on 29 December 2016, at 23:11.
- Text is available under the Creative Commons Attribution-ShareAlike License; additional terms may apply. By using this site, you agree to the Terms of Use and Privacy Policy. Wikipedia® is a registered trademark of the Wikimedia Foundation, Inc., a non-profit organization.