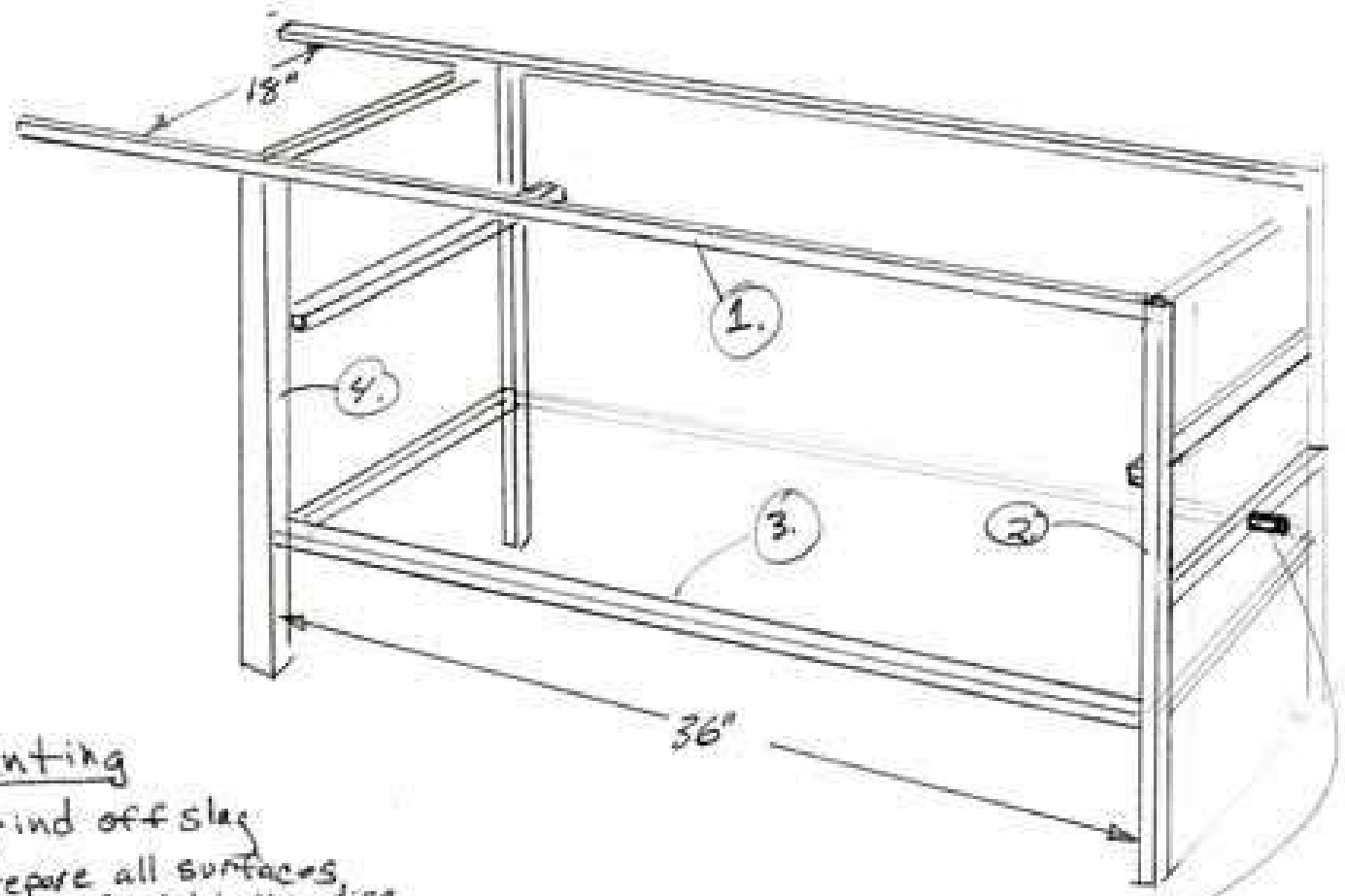


# Frame



## Welding/Assembly

Position parts 1 through 4 on shop floor or welding table, and tack weld.

↓  
position opposite four pieces on tack-welded subassembly, and tack weld

↓  
Lay first sub-assembly on floor, hold one crosspiece at a time in position and tack weld.

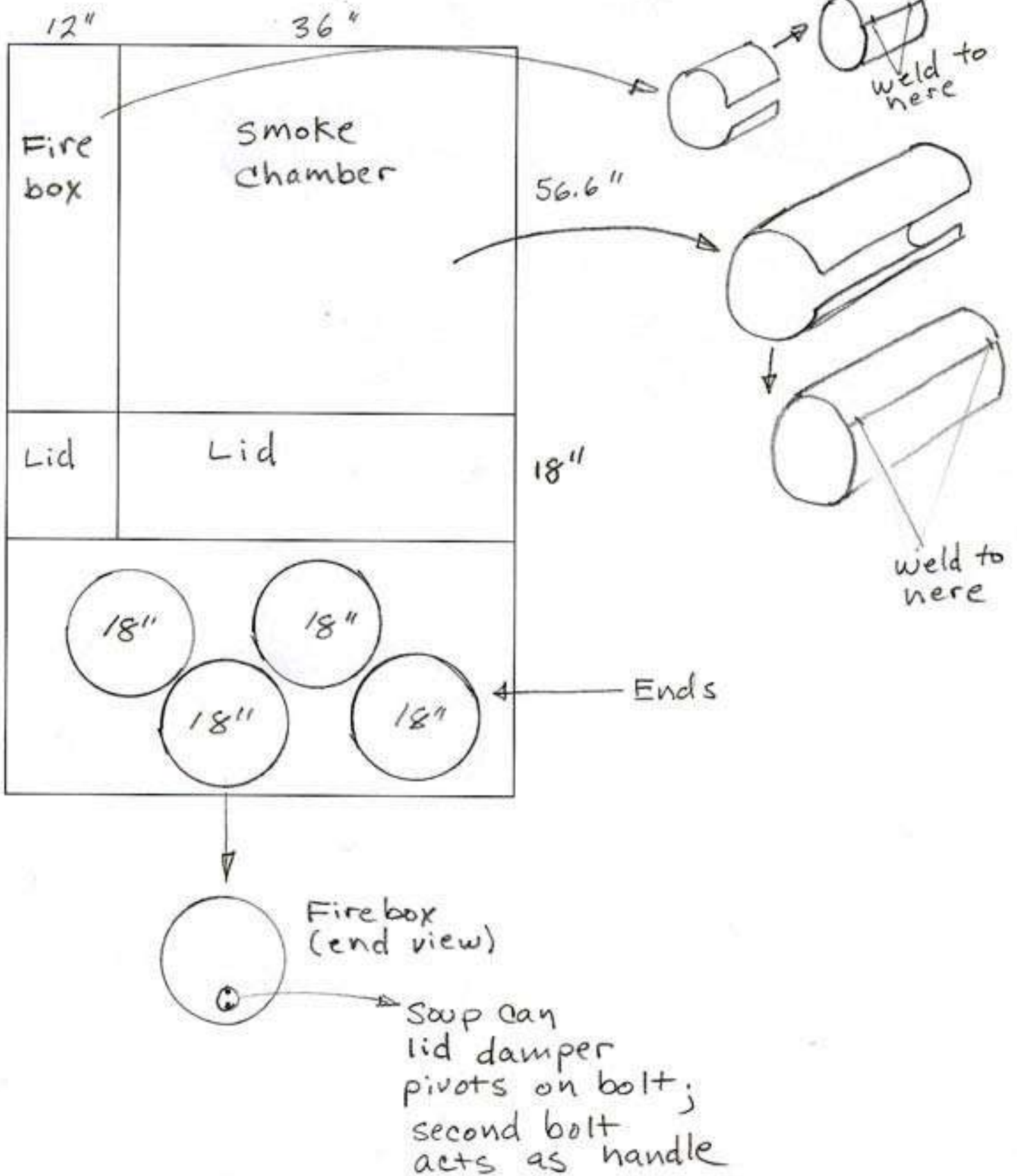
↓  
With all pieces tack welded, square up assembly using a nylon ratchet strap. Finish weld.

Mounting Stud  
(see Vent dug)

## Painting

- grind off slag
- prepare all surfaces with Scotch brite disc attached in drill
- apply one coat of zinc-rich gold galvanizing compound primer
- apply two coats Rust-oleum Hammerstone paint

4' x 10' sheet of 10 ga. mild steel

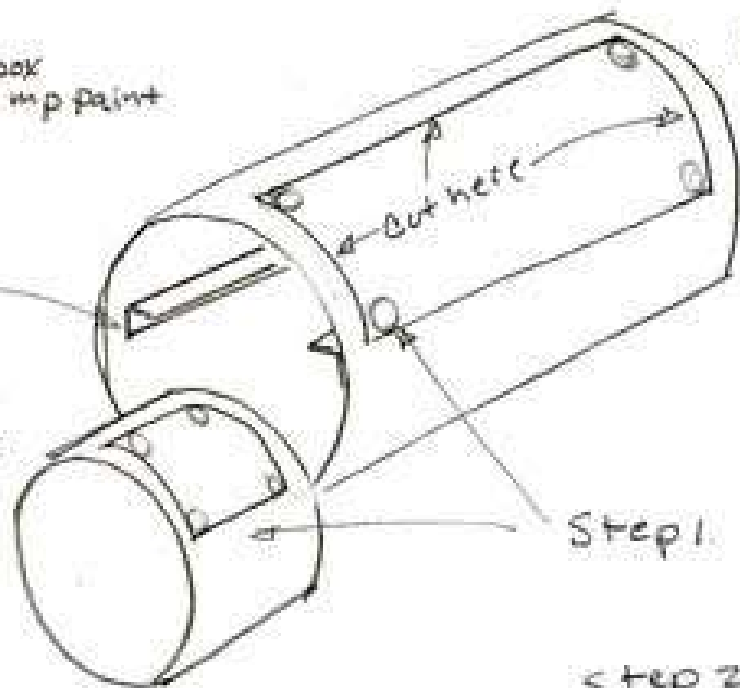


## painting/assembly

- Radius all sheared edges
- Grind  $\frac{1}{2}$ " radius on all lid corners
- Remove all mill scale and rust with scotchbrite disc chucked in a drill
- Clean and degrease with lacquer thinner or other solvent
- Paint outside of smokebox and firebox with high-temp paint
- Paint outside of lids
- rivet lids in place

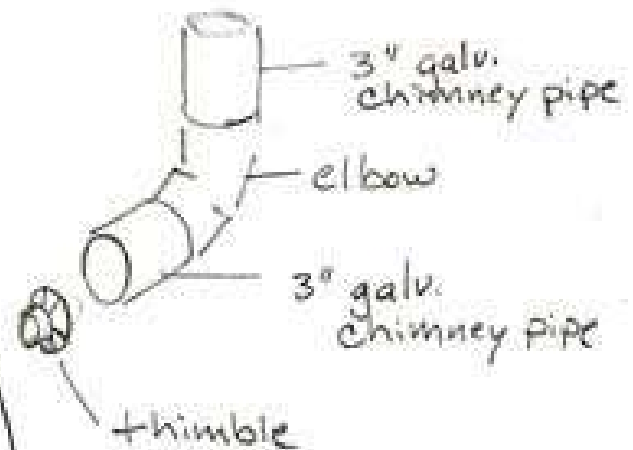
$\frac{3}{4}$ " angle iron welded to sides of smoke chamber  
Support grates

Grates:  
 $11 \frac{3}{4} \times 17 \frac{3}{4}$   
Weber grill replacement parts

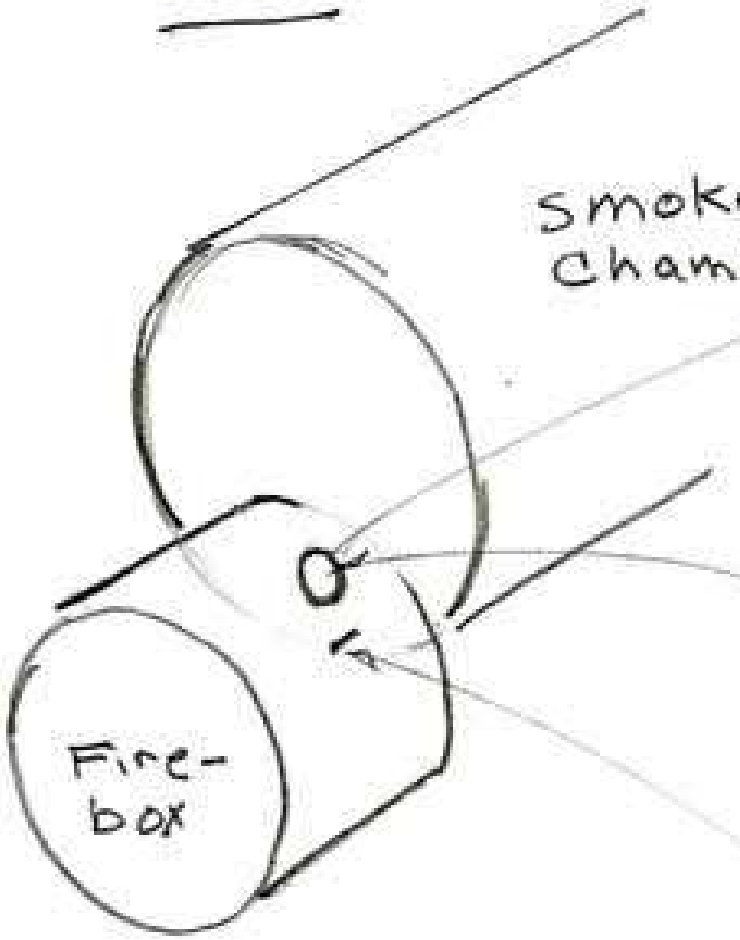


Step 1. make 2" dia.  
cuts with hole saw

step 2. make 3-sided  
cut to remove  
scrap



# Vent



Smoke Chamber

See photo

Fire-box

2- $\frac{1}{2}$ " - dia. hole for vent assembly

## Vent Assembly

- one 2" closed nipple
- one 2" union disassembled

$\frac{5}{16}$ " x  $1\frac{1}{2}$ " bolt serves as mounting stud. Allows fire box to be easily supported while vent is inserted and assembled