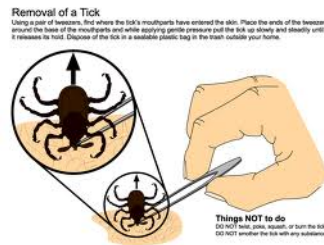
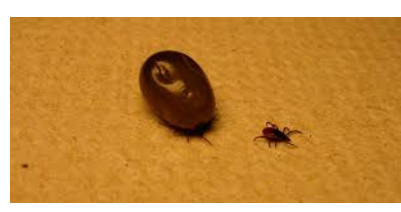
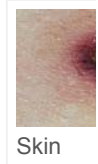
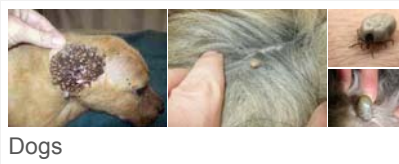


ticks

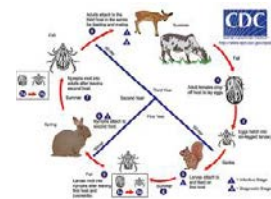
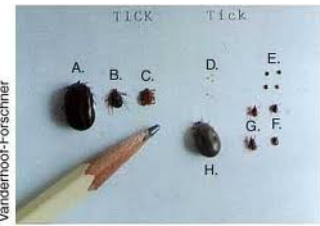
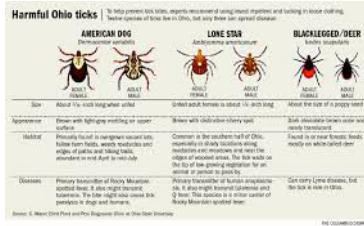
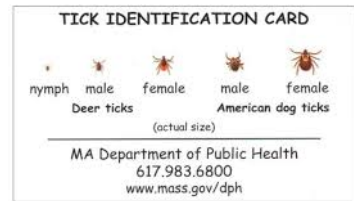
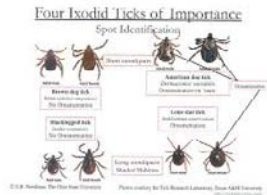
Sign in

Web **Images** Videos News Shopping More - Search tools

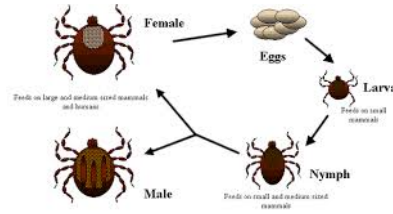
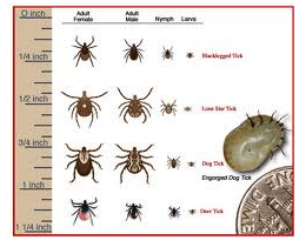
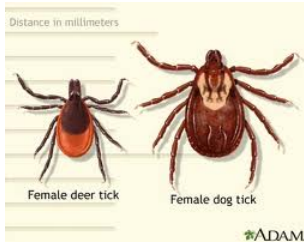
SafeSearch











Flushing a tick down the toilet should be the last you'll see of that critter.

However, TERC recommends testing the tick, especially those found on family members, to an index card with the date and location found. Hang on to the card for 6 months or so, just in case unusual symptoms appear. That way you can always have the tick tested for pathogens.



Species	Larva	Nymph	Male	Female	Unengorged/engorged	Engorged
Blacklegged tick	1/8 - 1/4 inch	1/8 - 1/4 inch	1/8 - 1/4 inch	1/4 - 1/2 inch	1/4 - 1/2 inch	1/4 - 1/2 inch
Lone Star tick	1/8 - 1/4 inch	1/8 - 1/4 inch	1/8 - 1/4 inch	1/8 - 1/4 inch	1/8 - 1/4 inch	1/8 - 1/4 inch
Dog tick	1/8 - 1/4 inch	1/8 - 1/4 inch	1/8 - 1/4 inch	1/8 - 1/4 inch	1/8 - 1/4 inch	1/8 - 1/4 inch
Chin tick	1/8 - 1/4 inch	1/8 - 1/4 inch	1/8 - 1/4 inch	1/8 - 1/4 inch	1/8 - 1/4 inch	1/8 - 1/4 inch







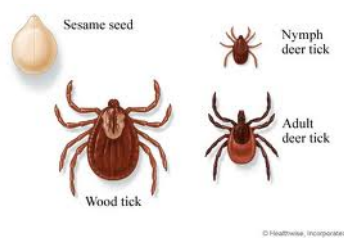
Ticks on a Spanish Galgo



Source: <http://forthehealthofour.gov/pressroom/lyme-disease-and-ticks-and-what-to-look-for.pdf>



©Dermnet.com



Sesame seed

Nymph deer tick

Adult deer tick

Wood tick

© Healthline, Incorporated



©Dermnet.com



Tick **Bite**-ology

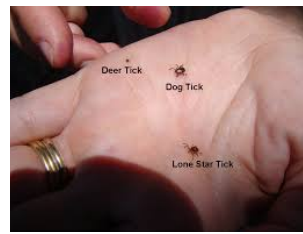
They've crawled up your leg... **NOW WHAT?**

A dozen secrets about tick piercing, sucking, and pathogen transmission revealed.



©Dermnet.com

©Dermnet.com



Tick, female (magnified from 3mm length)

Nymph Stage of Tick (most common stage for transmission of Lyme disease)

© 2004 MedicineNet, Inc.





**LYME DISEASE ALERT**  
 Do a thorough body check for ticks after being outdoors.

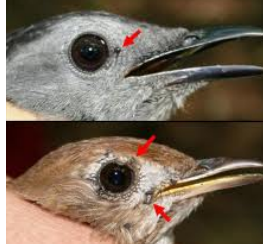
**How To Remove A Tick**

- Using tweezers, grasp tick near the mouth parts, as close to skin as possible.
- Pull tick in a steady upward motion away from skin.
- DO NOT use kerosene, matches, or petroleum jelly to remove tick.
- Disinfect site with soap and water, rubbing alcohol or hydrogen peroxide.

Record date and location of tick bite. If such or flu-like symptoms appear contact your health care provider immediately.

**DISEASE RISK IS REDUCED IF TICK IS REMOVED WITHIN 36 HOURS.**

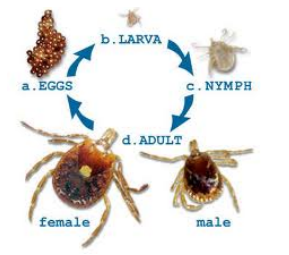
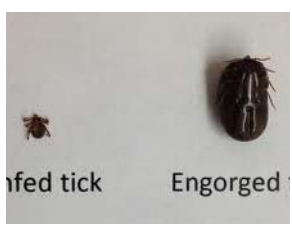
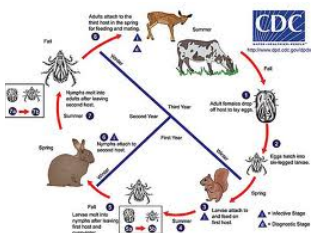
New York State Department of Health



**CHECK "BELOW THE BELT" FOR POPPY-SEED SIZED TICKS WHILE SITTING ON THE TOILET.**

TickSmart

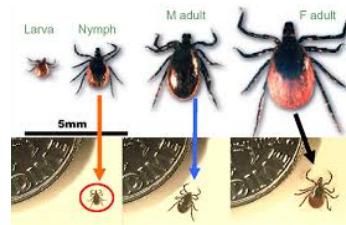
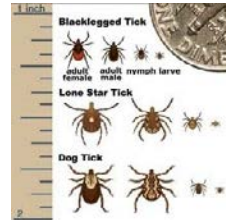
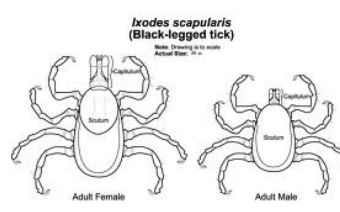
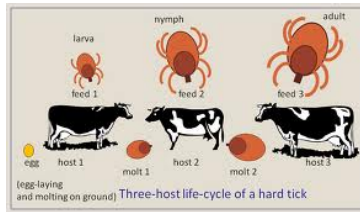
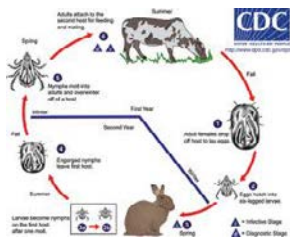
Safely remove any attached ticks on the toilet using TickSmart.



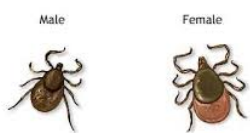








Deer Ticks



#ADAM



**tick removal**

Remove ticks immediately. They usually need to attach for 24 hours to transmit Lyme disease. Consult a physician if you remove an engorged deer tick.

**Using tick spore:**

- Place the side part of the comb on the skin near the tick (hold skin taut if necessary)
- Applying slight pressure downward on the skin while the spore moves toward the neck part of the comb is framing the tick
- Continuous sliding motion of the comb detaches the tick

**Using tweezers:**

- Grasp the tick close to the skin with tweezers
- Pull gently until the tick lets go

1-800-423-5821  
www.maine.gov/health

**tick ID**

KNOW THEM. PREVENT THEM.

Deer Tick (Black-legged Tick)

synonym: adult female, adult male, nymph, larva

Dog Tick

synonym: adult female, adult male, nymph, larva

Lone Star Tick

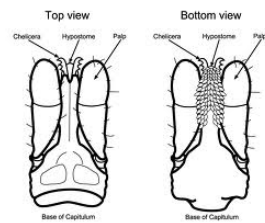
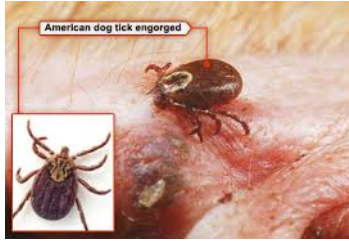
synonym: adult female, adult male, nymph, larva

**Dermacentor variabilis (American Dog ticks)**

**Amblyomma americanum (Lone Star ticks)**



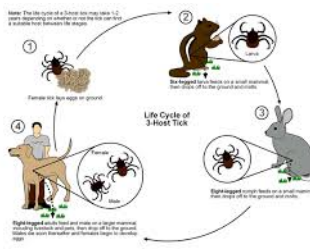




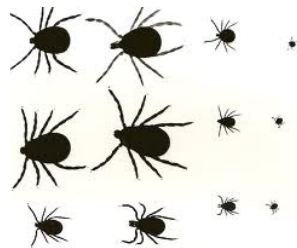




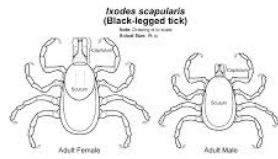
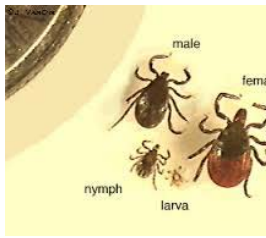
Species	Carica	Nephytia	Male	Female	Embryo/egg	Early Instar	Adult
Lone Star Tick							
Eng Tick							
Deer Tick							
Scrub Tick							
Blacklegged Tick							
Rock Sucker Tick							
Parasitic Tick							



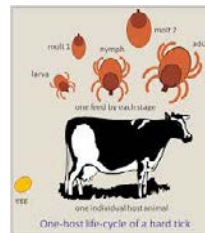
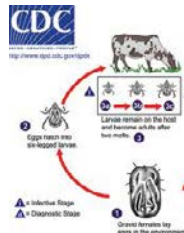
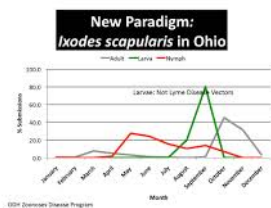
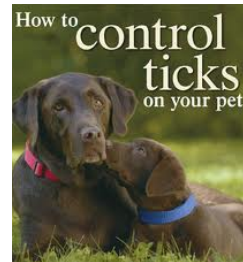
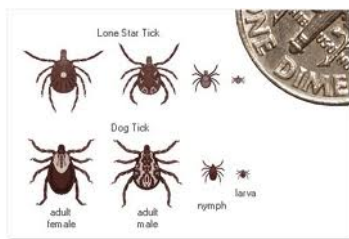
Spinose ear tick, *Otobius megnini* nymph after feeding



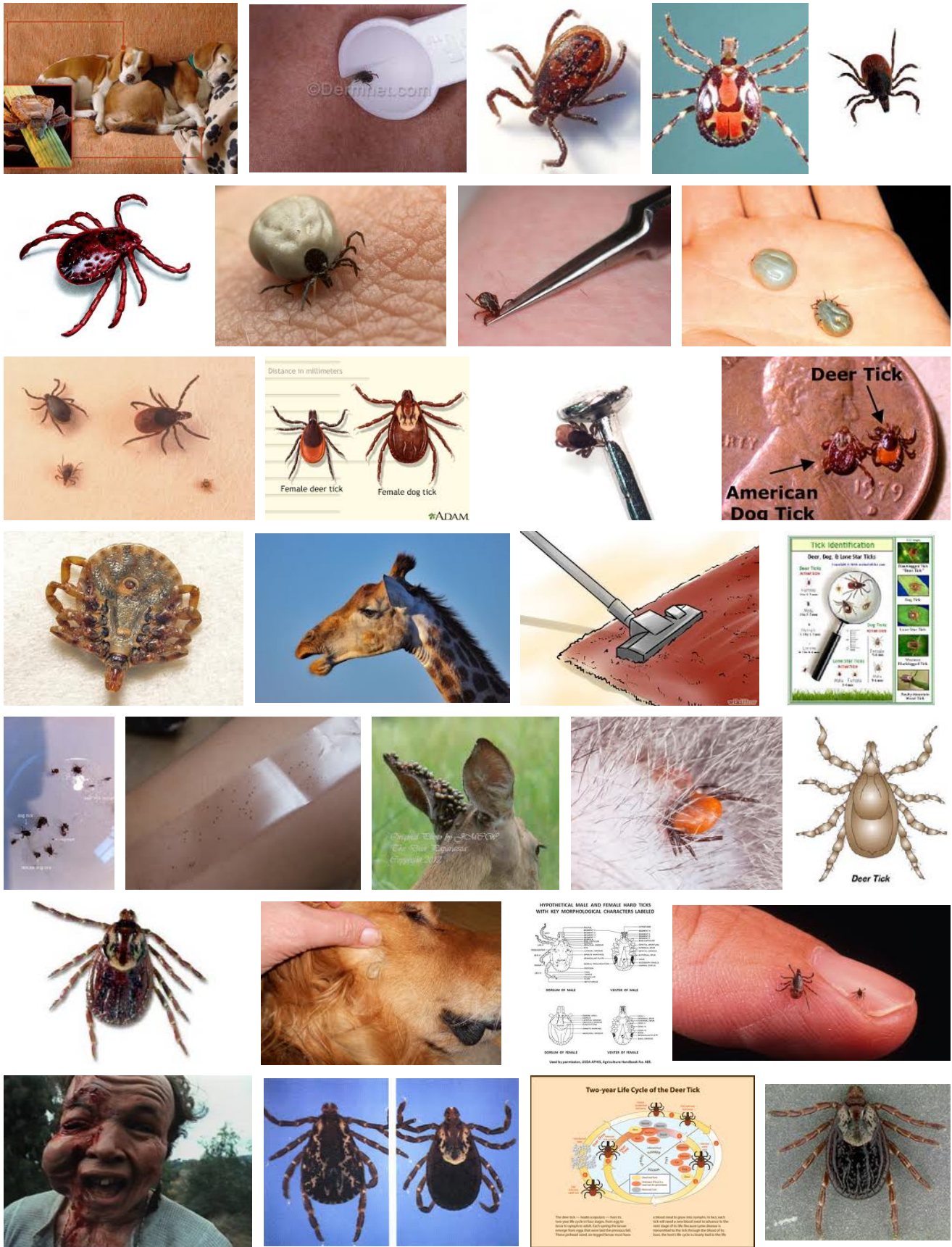












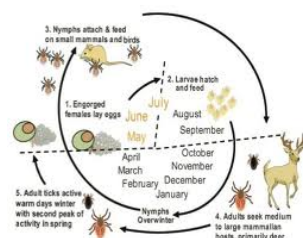
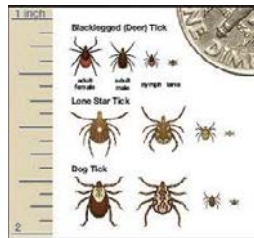
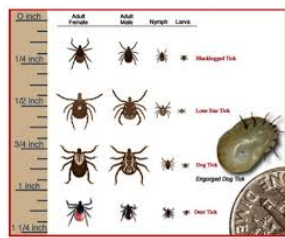








**BE TICK SMART**  
**REPEL • INSPECT • REMOVE**



Show more results